

Monthly Report on Short-term Transactions of Electricity in India

January 2022



Economics Division
Central Electricity Regulatory Commission
36, Janpath, Chanderlok Building



Contents

S.No.	Contents	Page No
	Contents	i
	List of Tables	ii
	List of Figures	iii
	Abbreviations	iv
1	Introduction	1
2	Volume of Short-term Transactions of Electricity	1
3	Price of Short-term Transactions of Electricity	3
3.1	<i>Price of electricity transacted through Traders</i>	3
3.2	<i>Price of electricity transacted through Power Exchanges</i>	3
3.3	<i>Price of electricity transacted through DSM</i>	3
4	Trading Margin	4
5	Volume of Short-term Transactions of Electricity (Regional Entity-wise)	4
6	Congestion on Inter-State Transmission Corridor for Day-Ahead Market and Real Time Market on Power Exchanges	5
7	Volume and Price of Renewable Energy Certificates (RECs)	6
8	Inferences	7

S.No.	List of Tables	Page No.
Table-1	Volume of Short-term Transactions of Electricity in India	9
Table-2	Percentage Share of Electricity Transacted by Trading Licensees	11
Table-3	Price of Electricity Transacted through Traders	12
Table-4	Price of Electricity Transacted through Traders (Time-wise)	12
Table-5	Price of Electricity Transacted in Day Ahead Market through Power Exchanges	12
Table-6	Price of Electricity Transacted in Green Day Ahead Market through Power Exchanges	12
Table-7	Price of Electricity Transacted in Real Time Market through Power Exchanges	12
Table-8	Volume and Price of Electricity in Term Ahead Market of IEX	13
Table-9	Volume and Price of Electricity in Term Ahead Market of PXIL	13
Table-10	Volume and Price of Electricity in Green Term Ahead Market of IEX	13
Table-11	Volume and Price of Electricity in Green Term Ahead Market of PXIL	13
Table-12	Price of Electricity Transacted through DSM	13
Table-13	Volume of Electricity Sold through Bilateral	15
Table-14	Volume of Electricity Purchased through Bilateral	17
Table-15	Volume of Electricity Sold in Day Ahead Market through Power Exchanges	18
Table-16	Volume of Electricity Purchased in Day Ahead Market through Power Exchanges	20
Table-17	Volume of Electricity Sold in Green Day Ahead Market through Power Exchanges	21
Table-18	Volume of Electricity Purchased in Green Day Ahead Market through Power Exchanges	21
Table-19	Volume of Electricity Sold in Real Time Market through Power Exchanges	22
Table-20	Volume of Electricity Purchased in Real Time Market through Power Exchanges	24
Table-21	Volume of Electricity Under drawal through DSM	25
Table-22	Volume of Electricity Over drawal through DSM	28
Table-23	Total Volume of Net Short-term Transactions of Electricity (Regional Entity-wise)	31
Table-24	Details of Congestion in Power Exchanges	35
Table-25	Volume of Short-term Transactions of Electricity in India (Day-wise)	36
Table-26(a)	Price Of Short-Term Transactions of Electricity (Day-Wise)	37
Table-26(b)	Price Of Short-Term Transactions of Electricity (Day-Wise)	38
Table-27	Volume of Short-term Transactions of Electricity (Regional Entity-wise)	39
Table-28	Volume and Price of Renewable Energy Certificates (RECs) Transacted through Power Exchanges	43

S. No.	List of Figures	Page No.
Figure-1	Volume of Various Kinds of Electricity Transactions in Total Electricity Generation	9
Figure-2	Volume of Short-term Transactions of Electricity	9
Figure-3	Volume transacted in different markets segments on Power Exchanges	10
Figure-4	Volume of Short-term Transactions of Electricity (Day-wise)	10
Figure-5	Percentage Share of Electricity Transacted by Trading Licensees	11
Figure-6	Price of Short-term Transactions Electricity	14
Figure-7	Price of Short-term Transactions Electricity (Day-wise)	14

Abbreviations

Abbreviation	Expanded Version
ABSP_ANTP	Acme Bhiwadi Solar Power Private Limited, Anantpur
ACBIL	ACB (India) Limited
ACP	Area Clearing Price
ACV	Area Clearing Volume
ACME_SLR	ACME Solar Power Project
ACME_RUMS	Acme Rewa Ultra Mega Solar Project
ADANI GREEN	Adani Green Energy Limited
ADANIHB_SLR	Adani Hybrid Energy Jaisalmer One Limited (Solar)
ADANI_SLR 4	Adani Solar Energy Four Private Limited
ADANIHB_WIND	Adani Hybrid Energy Jaisalmer One Limited (Wind)
ADY1_PVGD	Adyah Solar Energy Pvt Ltd., Block 1 Pavagada Solar Park
ADY2_PVGD	Adyah Solar Energy Pvt Ltd., Block 2 Pavagada Solar Park
ADY3_PVGD	Adyah Solar Energy Pvt Ltd., Block 3 Pavagada Solar Park
ADY6_PVGD	Adyah Solar Energy Pvt Ltd., Block 6 Pavagada Solar Park
ADY10_PVGD	Adyah Solar Energy Pvt Ltd., Block 10 Pavagada Solar Park
ADY13_PVGD	Adyah Solar Energy Pvt Ltd., Block 13 Pavagada Solar Park
AGEMPL BHUJ	Adani Green Energy (MP) Ltd., Bhuj
AHEJOL_S_FTG2	Adani Hybrid Energy Jaisalmer One Limited (SOLAR)
AHEJOL_W_FTG2	Adani Hybrid Energy Jaisalmer One Limited (WIND)
AHEJ2L_SOLAR	Adani Hybrid Energy Jaisalmer Two Limited (Solar)
AHEJ3L_SOLAR	Adani Hybrid Energy Jaisalmer Three Limited (Solar)
AHEJ4L_SOLAR	Adani Hybrid Energy Jaisalmer Four Limited-Hybrid Solar
AHEJ4L_WIND	Adani Hybrid Energy Jaisalmer Four Limited-Hybrid Wind
AHSP_ANTP	Acme Hisar Solar Power Private Limited, Anantpur
AKS_PVGD	ACME Kurukshetra Solar Energy Pvt. Ltd
AKSP_ANTP	Acme Karnal Solar Power Private Limited, Anantpur
ALFANAR_BHUJ	Alfanar Group Wind Project, Bhuj, Gujarat
AMPS Hazira	Arcelor Mittal Nippon Steel, Hazira
APTEL	Appellate Tribunal for Electricity
ARERJL_SLR	Adani Renewable Energy Park Rajasthan Ltd.
ARINSUM_RUMS	Solenergi Rewa Ultra Mega Solar Project
ARS_PVGD	ACME REWARI Solar Power Pvt Ltd.
ASEJTL_SLR	Adani Solar Energy Jodhpur Two Ltd.
AVAADA1_PVGD	Avaada Solar Energy Private Ltd., Pavagada Project 1
AVAADA2_PVGD	Avaada Solar Energy Private Ltd., Pavagada Project 2
AVADARJHN_SLR	Avaada Rjhn Private Limited_Solar
AYANA_NPKUNTA	Ayana Power, NP Kunta
AZURE_ANTP	Azure Power, Anantpur
AZURE_PVGD	Azure Power, Pavagada
AZURE_SLR	Azure Power Solar Power Project
AZURE34_SLR	Azure Power 34 Pvt. Ltd. Solar Power Project
AZURE43_SLR	Azure Power Forty Three Private Limited
BALCO	Bharat Aluminum Company Limited
BARC	Bhabha Atomic Research Centre
BBMB	Bhakra Beas Management Board
BETAM_TCN	Betam Wind Energy Private Limited, Tuticorin

BHADRAVATHI HVDC	Bhadravathi High Voltage Direct Current Link
BRBCL	Bhartiya Rail Bijlee Company Limited
CEA	Central Electricity Authority
CERC	Central Electricity Regulatory Commission
CGPL	Coastal Gujarat Power Limited
CHUKHA HEP	Chhukha Hydroelectric Project, Bhutan
CHUZACHEN HEP	Chuzachen Hydro Electric Power Project
CLEAN_SLR	Clean Solar Power Pvt. Ltd
COASTGEN	Coastal Energen Private Limited
DAGACHU	Dagachhu Hydro Power Corporation
DAM	Day Ahead Market
DB POWER	Diligent Power Pvt. Ltd.
DCPP	Donga Mahua Captive Power Plant
DGEN MEGA POWER	DGEN Mega Power Project
DGPCL Bhutan	Druk Green Power Corporation Ltd., Bhutan
DHARIWAL POWER	Dhariwal Power Station
DIKCHU HEP	Dikchu Hydro-electric Project, Sikkim
DOYANG HEP	Doyang Hydro Electric Project
DSM	Deviation Settlement Mechanism
DVC	Damodar Valley Corporation
EDEN_SLR	Eden RE Cite Private limited
EMCO	EMCO Energy Limited
ESPL_RADHANESDA	Electro Solaire Private Limited, Radhanesda
ESSAR POWER	Essar Power Limited
ESSAR STEEL	Essar Steel Ltd
FORTUM1_PVGD	Fortum Finnsurya Energy Private Ltd, Pavagada Project 1
FORTUM2_PVGD	Fortum Finnsurya Energy Private Ltd, Pavagada Project 2
FRV_ANTP	Fotowatio Renewable Ventures, Anantapur
FRV_NPK	Fotowatio Renewable Ventures, NP Kunta
GIPCL_RADHANESDA	Gujarat Industries Power Company Ltd, Radhanesda
GIWEL_BHUI	Green infra wind energy Limited, Bhuj
GIWEL_TCN	Green Infra Wind Energy Limited, Tuticorin
GMR CHHATTISGARH	GMR Chhattisgarh Energy Limited
GMR KAMALANGA	GMR Kamalanga Energy Ltd.
G-DAM	Green Day Ahead Market
G-TAM	Green Term Ahead Market
HVDC ALPD	Alipurduar High Voltage Direct Current Link
HVDC CHAMPA	Champa-Kurukshetra High Voltage Direct Current Link
HVDC PUS	Pasauli High Voltage Direct Current Link
HVDC RAIGARH	Raigarh-Pugalur High Voltage Direct Current Link
IEX	Indian Energy Exchange Limited
IGSTPS	Indira Gandhi Super Thermal Power Station Jhajjar
IL&FS	Infrastructure Leasing & Financial Services Limited
INOX_BHUI	INOX Wind Limited, Bhuj, Gujarat
J&K	Jammu & Kashmir
JAYPEE NIGRIE	Jaypee Nigrie Super Thermal Power Project
JHABUA POWER MP	Jhabua Thermal Power Project
JINDAL POWER	Jindal Power Limited
JINDAL STAGE-II	Jindal Power Ltd Stage II
JITPL	Jindal India Thermal Power Ltd.

JORETHANG	Jorethang Loop Hydroelectric Power Project
KAPP 3&4	Kakrapar Atomic Power Station Unit 3 & 4
KARCHAM WANGTOO	Karcham Wangtoo H.E. Project
KORBA WEST POWER	Korba West Power Company Limited
KOTESHWAR	Koteshwar Hydro Power project
KREDL_PVGD	Karnataka Renewable Energy Development Ltd,Pavagada
KSK MAHANADI	KSK Mahanadi Power Ltd
KSMPL_SLR	Kilaj Solar (Maharashtra) Private Limited
KURICHU HEP	Kurichhu Hydro-electric Power Station, Bhutan
LANKO_AMK	LancoAmarkantak Power Private Limited
LANKO BUDHIL	LancoBudhil Hydro Power Private Limited
LANKOKONDAPALLY	Lanco Kondapally Power Private Limited
LOKTAK	Loktak Power Project
MAHINDRA_RUMS	Mahindra Rewa Ultra Mega Solar Project
MAHOBASL	Mahoba Solar Power Project
MALANA	Malana Hydroelectric Plant
MANGDECHU HEP	Mangdechhu Hydroelectric Project, Mangdechhu River, Bhutan
Maruti Coal	Maruti Clean Coal and Power Limited
MB POWER	MB Power Ltd
MEENAKSHI	Meenakshi Energy Private Limited
MP	Madhya Pradesh
MRPL	Mahindra Renewables Private Limited
MTPS II	Muzaffarpur Thermal Power Station – Stage II
MYTRAH_TC	Mytrah Energy (India) Private Limited,Tuticorin
MU	Million Units
NAPP	Narora Atomic Power Plant
NCR ALLAHABAD	North Central Railway, Allahabad
NEEPCO	North Eastern Electric Power Corporation Limited
NEP	Nepal
NFL	National Fertilisers Limited
NHPC STATIONS	National Hydro Electric Power Corporation Ltd. Stations
NJPC	Nathpa Jhakri Hydroelectric Power Station
NLC	Neyveli Lignite Corporation Limited
NLDC	National Load Dispatch Centre
NPGC	Nabinagar Power Generating Company (Pvt.) Limited
NSPCL	NTPC - SAIL Power Company Private Limited
NTECLVallur	NTPC Tamil Nadu Energy Company Limited Vallur
NTPC_ANTP	NTPC Anantapur
NTPC STATIONS	National Thermal Power Corporation Ltd. Stations
NTPL	NLC Tamil Nadu Power Limited
NVVN	NTPC Vidyut Vyapar Nigam Limited
ONGC Platana	ONGC Tripura Power Company
OPGC	Odisha Power Generation Corporation
ORANGE_TC	Orange Renewable Power Pvt. Ltd,Tuticorin
OSTRO	Ostro Energy Private Limited
OTC	Over The Counter
PARAM_PVGD	Parampujya Solar Energy Private Ltd
PARE HEP	Pare hydroelectric project, Arunachal Pradesh
PX	Power Exchange
PXIL	Power Exchange India Limited

RAIL	Indian Railways
RAMPUR HEP	Rampur Hydro Electric Power Project
RANGIT HEP	Rangit Hydroelectric power project
RANGANADI HEP	Ranganadi Hydro Electric Power Project, Arunachal Pradesh
RAP-B	Rajasthan Atomic Power Plant-B
RAP-C	Rajasthan Atomic Power Plant-C
REC	Renewable Energy Certificate
REGL	Raigarh Energy Generation Limited
RENEW_BHACHAU	ReNew Power Limited, Bhachau
RENEW_BHUJ	ReNew Power Limited, Bhuj
RENEW_PVGD	ReNew Wind Energy (TN2) Private Limited
RENEW_SLR	Renew Solar
RENEW_SLR_BKN	Renew Solar Bikaner
RENEWJH_SLR	Renew Solar Energy (Jharkhand Three) Private Limited
RENEWSW_SLR	Renew Sun Waves Private Limited
RENEWURJA_SLR	ReNew Solar Urja Private Limited
RGPPL_IR	Ratnagiri Gas and Power Private Ltd., supply to Indian Railways
RGPPL_OTHER	Ratnagiri Gas and Power Private Limited
RLDC	Regional Load Dispatch Centre
RONGNICHU HEP	RongnichuHydro Electric Power Project
RPREL	Raipur Energen Limited
RSTPS_FSPP	NTPC Ramagundam STPS- Floating Solar PV Project
RTC	Round The Clock
RTM	Real Time Market
SasanUMPP	Sasan Ultra Mega Power Project
SB_SLR	Soft Bank Solar
SB6_POKARAN	SB Energy SixPrivate Limited, Pokaran
SBG_CLEANTECH_SLR	SBG Cleantech Ltd
SBG_NPK	SB Energy Solar Private Limited,NP Kunta
SBG_PVGD	SB Energy Solar Private Limited,Pavagada
SBSR_SLR	SBSR Power Cleantech Eleven Private Limited
SEMBCORP	SembcorpGayatri Power Ltd
SIMHAPURI	Simhapuri Energy Private Limited
SKS Power	SKS Power Generation Chhattisgarh Limited
SINGOLI BHATWARI HEP	Singoli-Bhatwari Hydroelectric Project, Uttarakhand
SPRNG_NPKUNTA	Sprng Energy, NP Kunta
SPRING_PUGALUR	Spring Solar Power Private Limited, Pugalur
TALA HEP	Tala Hydroelectric Project, Bhutan
TASHIDENG HEP	Tashiding Hydro Electric Project, Sikkim
TATA_ANTP	TATA Power Anantapur
TATA_PVGD	Tata Power Renewable Energy Ltd
TATA_SLR	Tata Solar
TEESTA STG3	Teesta Stage 3 Hydro Power Project
TEHRI	Tehri Hydro Electric Power Project
TAM	Term Ahead Market
THERMAL POWERTECH	Thermal Powertech Corporation India Limited
TPREL_RADHANESDA	Tata Power Renewable Energy Limited, Radhanesda
VINDHYACHAL HVDC	Vindhyachal High Voltage Direct Current Link
YARROW_PVGD	Yarrow Infra Structure Private Ltd

1. Introduction

1.1. A well-functioning electricity market requires an effective market monitoring process. The monthly report on short-term transactions of electricity, published by CERC since 2008 as part of its market monitoring process, provides a snapshot of key aspects of short-term transactions of electricity in India. Here, “short-term transactions of electricity” refers to the contracts of less than one year period, for electricity transacted (inter-State) through inter-State Trading Licensees and directly by the Distribution Licensees, Power Exchanges (Indian Energy Exchange Ltd (IEX) and Power Exchange India Ltd (PXIL), and Deviation Settlement Mechanism (DSM). The main objectives of the report are: (i) to analyze the volume and price of the short-term transactions of electricity; (ii) to assess the competition among the market players; (iii) to analyse the effect of congestion on volume of electricity transacted through power exchanges; (iv) to provide information on volume and price of Renewable Energy Certificates (RECs) transacted through power exchanges; and (v) to disseminate all other relevant market information. The analysis of short-term transactions of electricity during the month of **January 2022** is presented in the following sections.

2. Volume of Short-term Transactions of Electricity

2.1. During January 2022, total electricity generation, excluding generation from renewable and captive power plants in India was 108051.38 MU (Table-1). Of the total electricity generation, 13.68% was transacted through short-term, comprising of 6.53% through Day Ahead Market (DAM) and Real Time Market (RTM) of power exchanges, followed by 5.24% through bilateral (through traders and term-ahead contracts on power exchanges and directly between distribution companies) and 1.92% through DSM (Table-1 & Figure-1).

2.2. Of the total short-term transactions (14784.10 MU), 47.71% was transacted through DAM and RTM of power exchanges, followed by 38.28% through bilateral (25.67% through traders and term-ahead contracts on power exchanges, and 12.61% directly between distribution companies) and 14.01% through DSM (Table-1 & Figure-2). Daily volume of short-term transactions is shown in Table-25 & Figure-4.

2.3. Of the total volume of electricity transacted through power exchanges, 68.93% of the volume was transacted in DAM (including G-DAM), followed by 19.82% in RTM and 11.26% in Term Ahead Market (TAM) (including G-TAM) (Figure-3).

2.4. The share of electricity traded by each trading licensee is given in Table-2 & Figure-5. The volume of electricity transacted by the trading licensees includes bilateral transactions and the transactions undertaken through power exchanges. There were 39 trading licensees as of January 2022. Of which, 26 trading licensees were engaged in short-term trading. The top 5 trading licensees, namely PTC India Ltd., NTPC Vidyut Vyapar Nigam Ltd., Tata Power Trading Company (P) Ltd., Manikaran Power Ltd. and Adani Enterprises Ltd. had a share of 82.36% in the total volume of electricity traded by all the licensees.

2.5. Herfindahl-Hirschman Index (HHI), a commonly accepted index to calculate market concentration, has been used for measuring the competition among the trading licensees. Increase in the HHI generally indicates decrease in competition and increase of market concentration, and vice versa. The HHI below 0.15 indicates non-concentration, HHI between 0.15 and 0.25 indicates moderate concentration and HHI above 0.25 indicates high concentration. The HHI has been computed based on the volume of electricity traded (inter-State & intra-State) by inter-State trading licensees, and it was 0.2719 for the month of January 2022, which indicates high concentration of market power (Table-2).

2.6. The volume of electricity transacted in the DAM of IEX and PXIL was 5279.69 MU and 0.56 MU respectively. The volume of total buy bids and sell bids was 6939.41 MU and 11273.35 MU respectively in IEX, while the same was 6.13 MU and 47.75 MU respectively in PXIL.

2.7. The volume of electricity transacted in the G-DAM of IEX was 198.35 MU, while no electricity was transacted in the G-DAM of PXIL. The volume of total buy bids and sell bids was 576.51 MU and 331.69 MU respectively in IEX. The volume of total buy bids was 2.15 MU in PXIL, while no sell bids were received.

2.8. The volume of electricity transacted in the RTM of IEX was 1575.13 MU, while no electricity was transacted in the RTM of PXIL. The volume of total buy bids and sell bids was 2206.13 MU and 3162.94 MU respectively in IEX, while there were no bids in PXIL. The variation in the volume of buy bids and sell bids placed through power exchanges shows variation in the demand and supply position.

2.9. The volume of electricity transacted in the TAM of IEX and PXIL was 390.27 MU and 264.81 MU respectively (Table-8 & Table-9). The volume of electricity transacted in the Green Term Ahead Market (G-TAM) of IEX and PXIL was 80.82 MU and 158.95 MU respectively (Table-10 & Table-11).

3. Price of Short-term Transactions of Electricity

3.1. **Price of electricity transacted through Traders:** The minimum, maximum and weighted average sale prices for the electricity transacted through traders were ₹1.91/kWh, ₹6.13/kWh and ₹3.47/kWh respectively (Table-3). The weighted average sale prices were also computed for the electricity transacted during Round the Clock (RTC), Peak and Off-peak periods separately, and the sale prices were ₹3.40/kWh, ₹5.97/kWh and ₹3.92/kWh respectively (Table-4).

3.2. **Price of electricity transacted through Power Exchanges:** The minimum, maximum and weighted average prices for the electricity transacted in the DAM of IEX were ₹1.58/kWh, ₹11.27/kWh and ₹3.58/kWh respectively. These prices in the DAM of PXIL were ₹3.99/kWh, ₹4.99/kWh and ₹4.28/kWh respectively (Table-5). The minimum, maximum and weighted average prices for the electricity transacted in the G-DAM of IEX were ₹1.00/kWh, ₹8.00/kWh and ₹4.20/kWh respectively. (Table-6). The minimum, maximum and weighted average prices for the electricity transacted in the RTM of IEX were ₹0.50/kWh, ₹20.00/kWh and ₹3.57/kWh respectively (Table-7). The weighted average price of electricity transacted in the TAM of IEX and PXIL was ₹3.37/kWh and ₹3.57/kWh respectively (Table-8 and Table-9). The price of electricity transacted in the G-TAM of IEX and PXIL was ₹3.91/kWh and ₹3.90/kWh respectively (Table-10 and Table-11).

3.3. **Price of electricity transacted through DSM:** The minimum, maximum and average price of DSM was ₹0.00/kWh, ₹8.00/kWh and ₹3.24/kWh respectively (Table-12).

3.4. The comparison of prices of electricity transacted through trading licensees, power exchanges & DSM are shown in Figure-6. The daily prices of electricity transacted through power exchanges & DSM and their comparison are shown in Table-26(a) & (b) and Figure-7.

4. Trading Margin

4.1. As per the CERC (Procedure, Terms and Conditions for grant of trading licence and other related matters) Regulations 2020, the trading licensees are allowed to charge trading margin of not less than 0 paise/kWh and upto 7 paise/kWh. The weighted average trading margin charged by the trading licensees for bilateral transactions during the month was ₹0.029/kWh.

5. Volume of Short-term Transactions of Electricity (Regional Entity¹-Wise)

5.1. Of the total bilateral transactions, top 5 regional entities/states sold 45.53% of the volume. These were Raipur Energen Limited, Punjab, Jindal India Thermal Power Ltd., Delhi and Uttar Pradesh (Table-13). Top 5 regional entities/states purchased 58.22% of the volume, and these were Madhya Pradesh, Gujarat, Rajasthan, Himachal Pradesh and Odisha (Table-14).

5.2. Of the total DAM transactions of power exchanges, top 5 regional entities/states sold 53.10% of the volume, and these were West Bengal, Uttar Pradesh, Bihar, Chhattisgarh and Madhya Pradesh (Table-15). Top 5 regional entities/states purchased 51.80% of the volume, and these were Gujarat, Andhra Pradesh, Telangana, Jammu & Kashmir and Tamil Nadu (Table-16).

5.3. Of the total G-DAM transactions of power exchanges, top 5 regional entities/states sold 81.66% of the volume, and these were Karnataka, Madhya Pradesh, Andhra Pradesh, Adani Hybrid Energy Jaisalmer One Limited (Solar) and Adani Hybrid Energy Jaisalmer Three Limited (Solar) (Table-17). Top 5 regional entities/states purchased 83.23% of the volume, and these were Dadra & Nagar Haveli, Odisha, Assam, West Bengal and Maharashtra (Table-18).

5.4. Of the total RTM transactions of power exchanges, top 5 regional entities/states sold 48.69% of the volume, and these were Madhya Pradesh, Bihar, Rajasthan, Uttar Pradesh and West Bengal (Table-19). Top 5 regional entities/states purchased 61.27% of the volume, and

¹ In case of a State, the entities which are “selling” also include generators connected to State Grid and the entities which are “buying” also include open access consumers.

these were Jammu & Kashmir, Telangana, Andhra Pradesh, Maharashtra and Gujarat (Table-20).

5.5. Of the total DSM transactions, top 5 regional entities/states under drew 26.96% of the volume, and these were NTPC Stations (Western Region), Maharashtra, Uttar Pradesh, Gujarat and Madhya Pradesh (Table-21). Top 5 regional entities/states overdrew 22.81% of the volume, and these were NTPC Stations (Western Region), Rajasthan, NTPC Stations (Northern Region) Chhukha Hydroelectric Project Bhutan, and Gujarat (Table-22).

5.6. The total volume of net short-term transactions of electricity (Regional entity-wise), i.e., volume of net transactions through bilateral, power exchanges and DSM are shown in Table-23 & 27. Top 5 electricity selling regional entities/states were West Bengal, Uttar Pradesh, Raipur Energen Limited, Bihar and Chhattisgarh. Top 5 electricity purchasing regional entities/states were Gujarat, Jammu & Kashmir, Andhra Pradesh, Telangana and Tamil Nadu.

6. Congestion² on Inter-State Transmission Corridor for Day-Ahead Market and Real Time Market on Power Exchanges

6.1. Power exchanges use a price discovery mechanism in which the aggregate demand and supply are matched to arrive at an unconstrained market price and volume. This process assumes that there is no congestion in the inter-State transmission system between different regions. However, in reality, the system operator (NLDC) in coordination with RLDCs limits the flow (due to congestion) in the inter-State transmission system. In such a situation, power exchanges adopt a mechanism called “Market Splitting”³.

² “Congestion” means a situation where the demand for transmission capacity exceeds the available transfer capability

³ “Market Splitting” is a mechanism adopted by Power Exchanges, where the market is split in the event of transmission congestion, into predetermined (by NLDC) bid areas or zones, which are cleared individually at their respective area prices such that the energy balance in every bid area is reached based upon the demand and supply in individual bid areas and using the available transmission corridor capacity between various bid areas simultaneously. As a result of this market splitting the price of electricity in the importing region, where demand for electricity is more than supply, becomes relatively higher than the price of electricity in the exporting region.

6.2. The volume of electricity that could not be cleared due to congestion & other reasons and could not be transacted through power exchanges is the difference between unconstrained cleared volume and actual cleared volume. During the month of January 2022, congestion was experienced in RTM on IEX only (Table-24).

6.3. The volume of electricity that could not be cleared, due to congestion, in RTM on IEX was 0.0003% of the unconstrained cleared volume. In terms of time, congestion occurred was 0.10% during the month (Table-24).

7. Volume and Price of Renewable Energy Certificates (RECs)

7.1. The concept of Renewable Energy Certificates (RECs) seeks to address mismatch between availability of renewable energy and the requirement of the obligated entities to meet their renewable purchase obligation by purchasing green attributes of renewable energy remotely located, in the form of RECs. The REC mechanism is a market based instrument, to promote renewable sources of energy and development of electricity market.

7.2. One REC is equivalent to 1 MWh electricity injected into the grid from renewable energy sources. The REC is exchanged only in the power exchanges approved by CERC within the band of a floor price and forbearance (ceiling) price as notified by CERC from time to time. The first REC trading was held on power exchanges in May, 2011.

7.3. The details of REC transactions for the month of January 2022 are shown in Table-28. The market clearing volume of solar RECs transacted on IEX and PXIL were 193121 and 60897 respectively and the weighted average market clearing price of these RECs was ₹2300/MWh in IEX and ₹2400/MWh in PXIL. Market clearing volume of non-solar RECs transacted on IEX and PXIL were 933359 and 299506 respectively and the weighted average market clearing price of these RECs was ₹ 1000/MWh in IEX and ₹ 1000/MWh in PXIL.

7.4. The gap between the volume of buy and sell bids of RECs placed through power exchanges shows the variation in demand for both solar and non-solar RECs. For Solar RECs, the ratio of buy bids to sell bids was 0.86 and 2.03 in IEX and PXIL respectively. For non-solar RECs, the ratio of buy bids to sell bids was 0.56 and 0.63 in IEX and PXIL respectively.

8. Inferences:

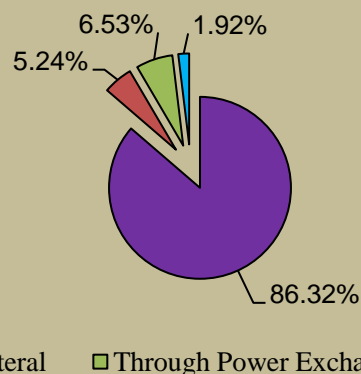
- a) The percentage of short-term transactions of electricity to total electricity generation was 13.68%.
- b) Of the total short-term transactions (14784.10 MU), 47.71% was transacted through DAM and RTM of power exchanges, followed by 38.28% through bilateral (25.67% through traders and term-ahead contracts on power exchanges, and 12.61% directly between distribution companies) and 14.01% through DSM.
- c) Of the total volume of electricity transacted through power exchanges, 68.93% of the volume was transacted in DAM (including G-DAM), followed by 19.82% in RTM and 11.26% in Term Ahead Market (TAM) (including G-TAM).
- d) Top 5 trading licensees had a share of 82.36% in the total volume traded by all the trading licensees.
- e) The Herfindahl Hirschman Index computed for the volume of electricity traded by trading licensees was 0.2719, indicating high concentration of market power.
- f) The weighted average price of electricity transacted through trading licensees was ₹3.47/kWh.
- g) The weighted average price of electricity transacted in the TAM of IEX and PXIL was ₹3.37/kWh and ₹3.57/kWh respectively. The weighted average price of electricity transacted in the G-TAM of IEX and PXIL was ₹3.91/kWh and ₹3.90/kWh respectively.
- h) The weighted average price of electricity transacted in DAM of IEX and PXIL was ₹3.58/kWh and ₹4.28/kWh. The weighted average price of electricity transacted in G-DAM of IEX was ₹4.20/kWh. The weighted average price of electricity transacted in RTM of IEX was ₹3.57/kWh. No electricity was transacted in the G-DAM & RTM of PXIL.
- i) The average price of electricity transacted through DSM was ₹3.24/kWh.
- j) The weighted average trading margin charged by the trading licensees for bilateral transactions was ₹0.029/kWh, which was in line with the Trading Licence Regulations 2020.

- k) Top 5 electricity selling regional entities/states were West Bengal, Uttar Pradesh, Raipur Energen Limited, Bihar and Chhattisgarh. Top 5 electricity purchasing regional entities/states were Gujarat, Jammu & Kashmir, Andhra Pradesh, Telangana and Tamil Nadu.
- l) During the month, congestion was experienced in RTM on IEX only. The volume of electricity that could not be cleared, due to congestion, in RTM on IEX was 0.0003% of the unconstrained cleared volume. In terms of time, congestion occurred was 0.10% during the month.
- m) The market clearing volume of solar RECs transacted on IEX and PXIL were 193121 and 60897 respectively and the weighted average market clearing price of these RECs was ₹2300/MWh in IEX and ₹2400/MWh in PXIL. Market clearing volume of non-solar RECs transacted on IEX and PXIL were 933359 and 299506 respectively and the weighted average market clearing price of these RECs was ₹ 1000/MWh in IEX and ₹ 1000/MWh in PXIL.

Table-1: VOLUME OF SHORT-TERM TRANSACTIONS OF ELECTRICITY (ALL INDIA), JANUARY 2022				
Sr.No	Short-term transactions	Volume (MU)	% to Volume of short-term transactions	% to Total Generation
1	Bilateral	5658.72	38.28	5.24
	(i) Through Traders and PXs	3795.00	25.67	3.51
	(ii) Direct	1863.72	12.61	1.72
2	Through Power Exchanges	7053.72	47.71	6.53
	(i) IEX			
	(a) DAM	5279.69	35.71	4.89
	(b) RTM	1575.13	10.65	1.46
	(c) GDAM	198.35	1.34	0.18
	(ii)PXIL			
	(a) DAM	0.56	0.004	0.001
	(b) RTM	0.00	0.00	0.00
	(c) GDAM	0.00	0.00	0.00
3	Through DSM	2071.65	14.01	1.92
	Total	14784.10	-	13.68
	Total Generation	108051.38	-	-

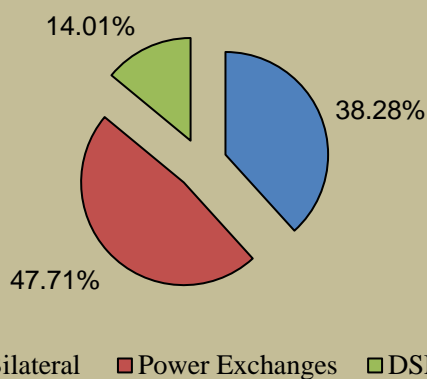
Source: NLDC

Figure-1: Volume of Various Kinds of Electricity Transactions in Total Electricity Generation, January 2022



■ Long-term ■ Bilateral ■ Through Power Exchanges ■ Through DSM

Figure-2: Volume of Short-term Transactions of Electricity, January 2022



■ Bilateral ■ Power Exchanges ■ DSM

Figure-3: Volume transacted in different markets segments on Power Exchanges, January 2022

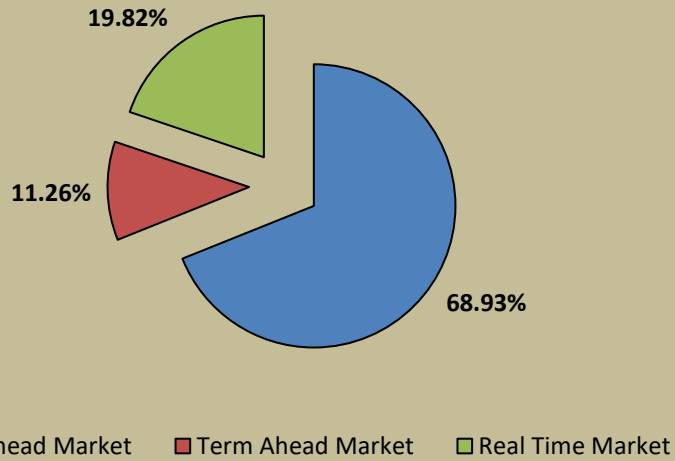


Figure-4: Volume of Short-term Transactions of Electricity, January 2022 (Day-wise)

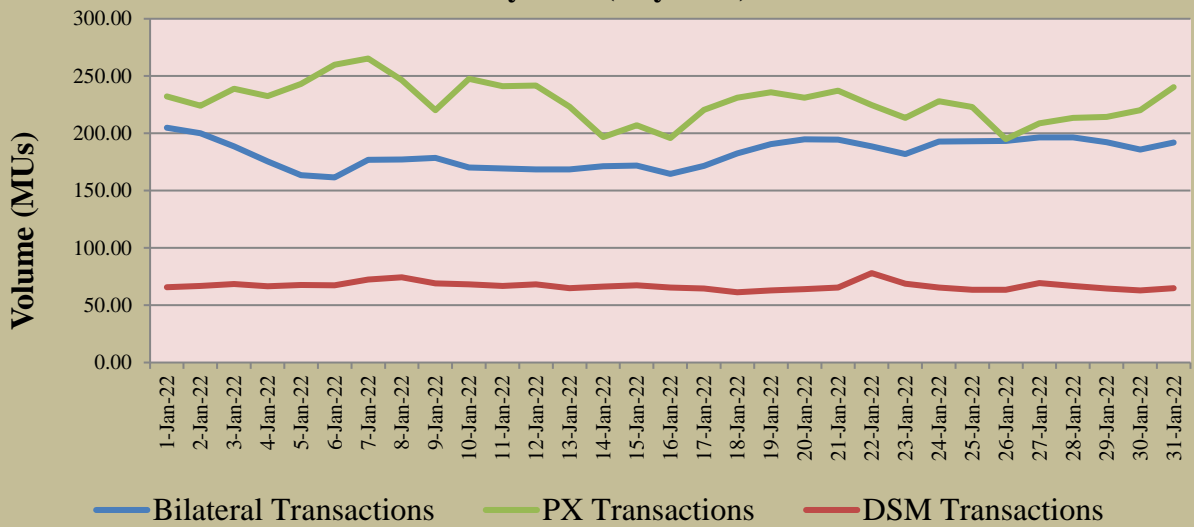


Table-2: PERCENTAGE SHARE OF ELECTRICITY TRANSACTED BY TRADING LICENSEES, JANUARY 2022

Sr. No	Name of the Trading Licensee	% Share in total Volume transacted by Trading Licensees	Herfindahl-Hirschman Index
1	PTC India Ltd.	48.39	0.2341
2	NTPC Vidyut Vyapar Nigam Ltd.	14.17	0.0201
3	Tata Power Trading Company (P) Ltd.	7.48	0.0056
4	Manikaran Power Ltd.	6.97	0.0049
5	Adani Enterprises Ltd.	5.36	0.0029
6	Arunachal Pradesh Power Corporation (P) ltd	4.26	0.0018
7	GMR Energy Trading Ltd.	3.21	0.0010
8	Kreate Energy (I) Pvt. Ltd.	2.76	0.0008
9	Essar Electric Power Development Corp. Ltd.	1.92	0.0004
10	Knowledge Infrastructure Systems (P) Ltd	1.00	0.0001
11	Instinct Infra & Power Ltd.	0.94	0.0001
12	National Energy Trading & Services Ltd.	0.90	0.0001
13	RPG Power Trading Company Ltd.	0.67	0.0000
14	Abja Power Private Limited	0.48	0.0000
15	JSW Power Trading Company Ltd	0.40	0.0000
16	Statkraft Markets Pvt. Ltd.	0.29	0.0000
17	Refex Energy Limited	0.27	0.0000
18	Saranyu Power Trading Private Limited	0.16	0.0000
19	Shubheksha Advisors Pvt. Ltd.	0.09	0.0000
20	Altilium Energie Private Limited	0.08	0.0000
21	NLC India Ltd.	0.08	0.0000
22	Shree Cement Ltd.	0.05	0.0000
23	Greenko Energies Pvt Ltd	0.04	0.0000
24	Customized Energy Solutions India (P) Ltd.	0.02	0.0000
25	Phillip Commodities India (P) Ltd.	0.01	0.0000
26	Gita Power & Infrastructure Private Limited	0.002	0.0000
TOTAL		100.00%	0.2719
Top 5 trading licensees		82.36%	
<i>Note 1: Volume of electricity transacted by the trading licensees includes bilateral transactions (inter-state & intra-state) and the transactions undertaken through power exchanges.</i>			
<i>Note 2: Volume of electricity transacted by Global Energy Ltd. is not included.</i>			
<i>Source: Information submitted by trading licensees</i>			

Figure 5: Percentage Share of Electricity Transacted by Trading Licensees, January 2022

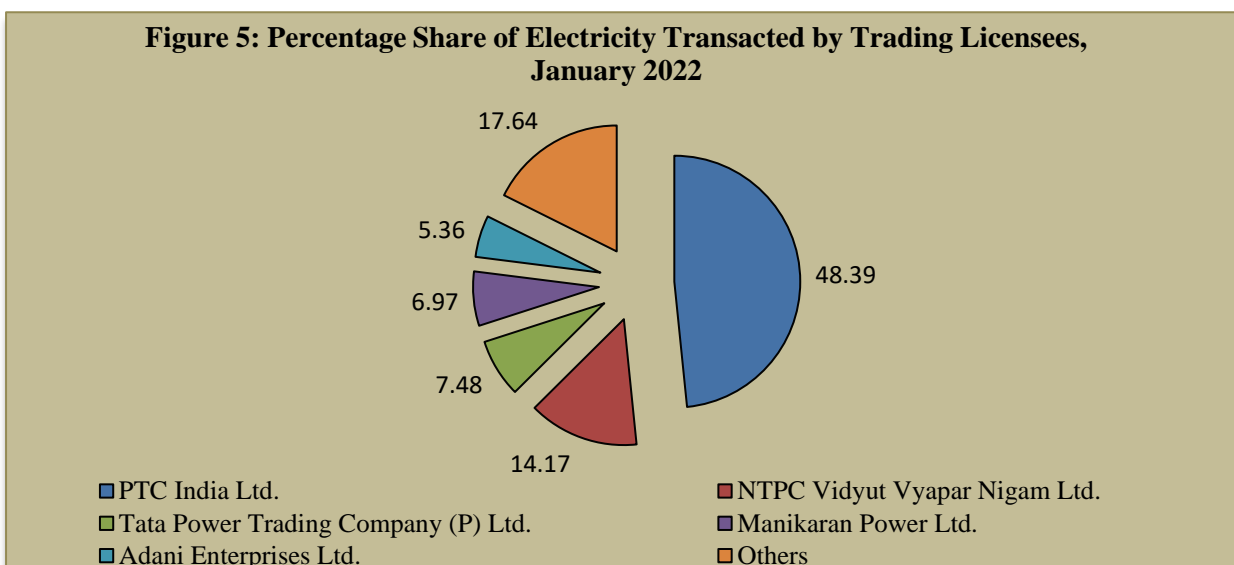


Table-3: PRICE OF ELECTRICITY TRANSACTED THROUGH TRADERS, JANUARY 2022		
Sr.No	Item	Sale Price of Traders (₹/kWh)
1	Minimum	1.91
2	Maximum	6.13
3	Weighted Average	3.47

Source: Information submitted by trading licensees

Table-4: PRICE OF ELECTRICITY TRANSACTED THROUGH TRADERS (TIME-WISE), JANUARY 2022		
Sr.No	Period of Trade	Sale Price of Traders (₹/kWh)
1	RTC	3.40
2	PEAK	5.97
3	OFF PEAK	3.92

Source: Information submitted by trading licensees

Table-5: PRICE OF ELECTRICITY TRANSACTED IN DAY AHEAD MARKET THROUGH POWER EXCHANGES, JANUARY 2022			
Sr.No	ACP	Price in IEX (₹/kWh)	Price in PXIL (₹/kWh)
1	Minimum	1.58	3.99
2	Maximum	11.27	4.99
3	Weighted Average	3.58	4.28

Source: IEX and PXIL

Table-6: PRICE OF ELECTRICITY TRANSACTED IN GREEN DAY AHEAD MARKET THROUGH POWER EXCHANGES, JANUARY 2022			
Sr.No	ACP	Price in IEX (₹/kWh)	Price in PXIL (₹/kWh)
1	Minimum	1.00	-
2	Maximum	8.00	-
3	Weighted Average	4.20	-

Source: IEX and PXIL

Table-7: PRICE OF ELECTRICITY TRANSACTED IN REAL TIME MARKET THROUGH POWER EXCHANGES, JANUARY 2022			
Sr.No	ACP	Price in IEX (₹/kWh)	Price in PXIL (₹/kWh)
1	Minimum	0.50	-
2	Maximum	20.00	-
3	Weighted Average	3.57	-

Source: IEX and PXIL

Table-8: VOLUME AND PRICE OF ELECTRICITY IN TERM AHEAD MARKET OF IEX, JANUARY 2022			
Sr.No	Term ahead contracts	Actual Scheduled Volume (MU)	Weighted Average Price (₹/kWh)
1	Intra-Day Contracts	0.17	3.50
2	Day Ahead Contingency Contracts	102.31	3.68
3	Daily Contracts	287.79	3.26
	Total	390.27	3.37

Source: IEX

Table-9: VOLUME AND PRICE OF ELECTRICITY IN TERM AHEAD MARKET OF PXIL, JANUARY 2022			
Sr.No	Term ahead contracts	Actual Scheduled Volume (MU)	Weighted Average Price (₹/kWh)
1	Intra-Day Contracts	0.25	8.00
2	Day Ahead Contingency Contracts	205.75	3.66
3	Any Day(s) Contracts	58.80	3.24
	Total	264.81	3.57

Source: PXIL

Table-10: VOLUME AND PRICE OF ELECTRICITY IN GREEN TERM AHEAD MARKET OF IEX, JANUARY 2022			
Sr.No	Green Term ahead contracts	Actual Scheduled Volume (MU)	Weighted Average Price (₹/kWh)
1	Intra-Day Contracts	1.23	3.53
2	Day Ahead Contingency Contracts	72.57	3.84
3	Daily Contracts	7.02	4.65
	Total	80.82	3.91

Source: IEX

Table-11: VOLUME AND PRICE OF ELECTRICITY IN GREEN TERM AHEAD MARKET OF PXIL, JANUARY 2022			
Sr.No	Green Term ahead contracts	Actual Scheduled Volume (MU)	Weighted Average Price (₹/kWh)
1	Day Ahead Contingency Contracts	156.17	3.89
2	Any Day(s) Contracts	2.78	4.31
	Total	158.95	3.90

Source: PXIL

Table-12: PRICE OF ELECTRICITY TRANSACTED THROUGH DSM, JANUARY 2022		
Sr.No	Item	Price in All India Grid (₹/kWh)
1	Minimum	0.00
2	Maximum	8.00
3	Average	3.24

Source: NLDC

Figure-6: Price of Short-term Transactions of Electricity, January 2022

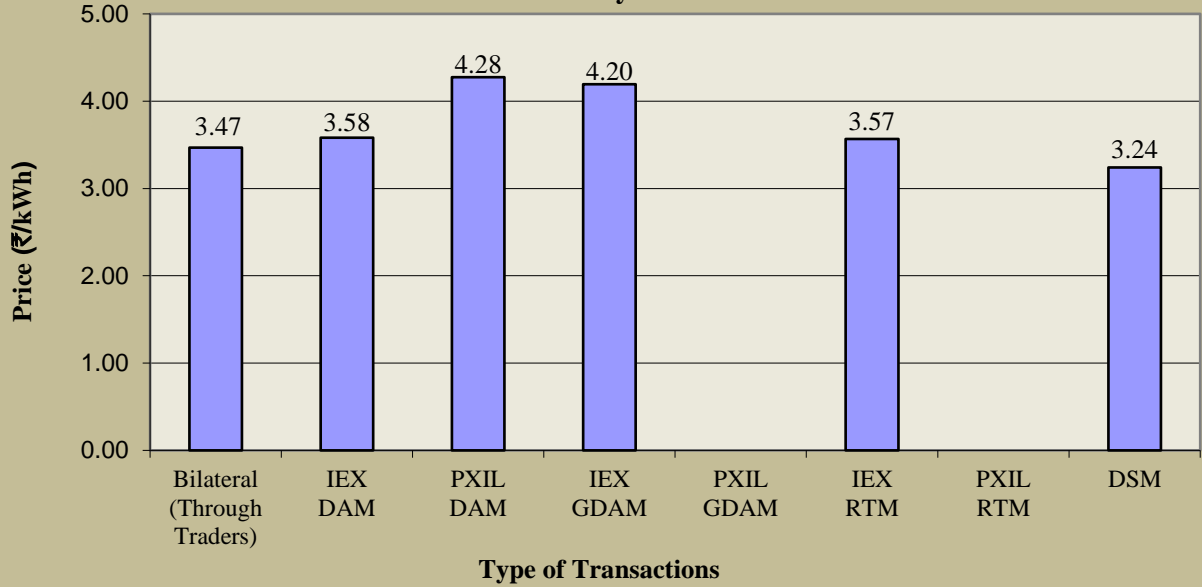
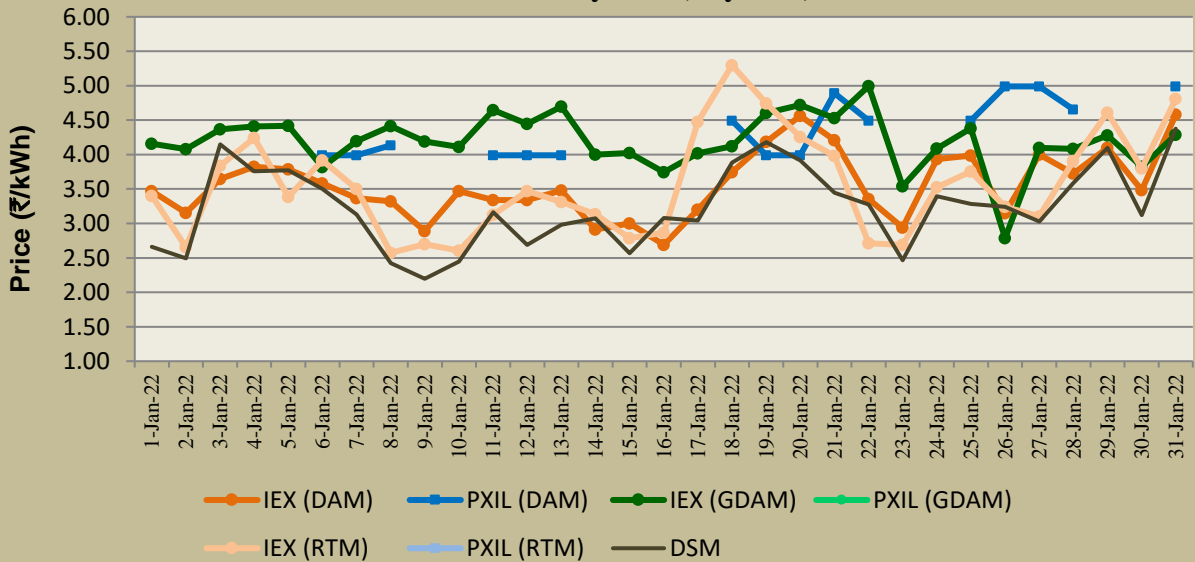


Figure-7: Weighted Average Price of Short-term Transactions of Electricity, January 2022 (Day-wise)



Note: On PXIL, no transactions were recorded in DAM on 1st- 5th, 9th- 10th, 14th - 17th, 23rd - 24th and 29th - 30th January 2022. Further, no electricity was transacted in G-DAM & RTM of PXIL during January 2022.

Table-13: VOLUME OF ELECTRICITY SOLD THROUGH BILATERAL, JANUARY 2022		
Name of the Entity	Volume of Sale (MUs)	% of Volume
RPREL	698.92	12.36
PUNJAB	657.61	11.63
JITPL	457.44	8.09
DELHI	388.94	6.88
UTTAR PRADESH	371.46	6.57
DB POWER	344.80	6.10
RKM POWER	313.57	5.55
HARYANA	214.62	3.80
CHHATTISGARH	202.63	3.58
SEMBCORP	182.84	3.23
JAYPEE NIGRIE	161.07	2.85
ADHUNIK POWER LTD	155.78	2.76
KARNATAKA	148.49	2.63
MB POWER	130.91	2.32
DVC	116.65	2.06
JINDAL STAGE-II	94.52	1.67
ODISHA	94.44	1.67
ESSAR POWER	82.58	1.46
WEST BENGAL	59.45	1.05
J & K	57.48	1.02
ADANIHB_SLR	56.36	1.00
JINDAL POWER	51.97	0.92
MP	44.48	0.79
AHEJ4L_SOLAR	44.39	0.79
RENEWSW_SLR	41.64	0.74
RENEWURJA_SLR	40.29	0.71
BIHAR	37.67	0.67
TATA_SLR	31.23	0.55
AHEJ3L_SOLAR	27.45	0.49
GMR KAMALANGA	26.27	0.46
AYANA_RP1	24.51	0.43
DAGACHU	24.12	0.43
JHABUA POWER_MP	23.68	0.42
TEESTA STG3	23.12	0.41
UTTARAKHAND	18.63	0.33
NEEPCO STATIONS	18.16	0.32
AVAADASN_SLR	17.05	0.30
AHEJ2L_SOLAR	17.02	0.30
TELANGANA	16.26	0.29
MAHARASHTRA	15.07	0.27
GOA	14.63	0.26
HIMACHAL PRADESH	10.64	0.19
AHEJ4L_WIND	10.08	0.18
ASEJTL_SLR	9.38	0.17
ONGC PALATANA	8.88	0.16
LANKO_AMK	8.18	0.14
DIKCHU HEP	7.64	0.14
ADANI_WIND	7.36	0.13
BALCO	6.43	0.11

MEGHALAYA	4.65	0.08
ARERJL_SLR	4.45	0.08
ANDHRA PRADESH	4.22	0.07
NAGALAND	3.72	0.07
ADANIHB_WIND	3.61	0.06
CONTINNUM PT	2.39	0.04
SORANG HEP	2.18	0.04
AHEJ2L_WIND	2.10	0.04
AZURE43_SLR	1.78	0.03
RAJASTHAN	1.42	0.03
AHEJ3L_WIND	1.37	0.02
TASHIDENG HEP	1.33	0.02
JORETHANG	1.18	0.02
GUJARAT	1.12	0.02
OSTRO	1.03	0.02
MANIPUR	0.37	0.01
REGL	0.36	0.01
Total	5654.07	100.00
Volume Sold by top 5 Regional Entities	2574.37	45.53

Table-14: VOLUME OF ELECTRICITY PURCHASED THROUGH BILATERAL, JANUARY 2022

Name of the Entity	Volume of Purchase (MUs)	% of Volume
MP	1151.15	20.34
GUJARAT	842.44	14.89
RAJASTHAN	501.64	8.86
HIMACHAL PRADESH	473.51	8.37
ODISHA	325.53	5.75
UTTARAKHAND	284.68	5.03
AMPS Hazira	274.28	4.85
WEST BENGAL	187.87	3.32
JHARKHAND	186.02	3.29
PUNJAB	166.80	2.95
KERALA	160.51	2.84
MAHARASHTRA	144.74	2.56
TAMIL NADU	134.48	2.38
HARYANA	102.19	1.81
ANDHRA PRADESH	100.68	1.78
DELHI	97.95	1.73
MEGHALAYA	94.73	1.67
CHHATTISGARH	67.41	1.19
UTTAR PRADESH	53.97	0.95
BIHAR	48.50	0.86
NEP	40.92	0.72
GOA	40.07	0.71
NCR ALLAHABAD	37.20	0.66
MANIPUR	27.90	0.49
SIKKIM	26.82	0.47
KARNATAKA	25.48	0.45
TELANGANA	23.76	0.42
ARUNACHAL PRADESH	22.69	0.40
DVC	5.15	0.09
NAGALAND	3.72	0.07
DADRA & NAGAR HAVELI	3.48	0.06
ASSAM	2.44	0.04
TOTAL	5658.72	100.00
Volume Purchased by top 5 Regional Entities	3294.28	58.22

Table-15: VOLUME OF ELECTRICITY SOLD IN DAY AHEAD MARKET THROUGH POWER EXCHANGES, JANUARY 2022

Name of the Entity	Volume of Sale (MUs)	% of Volume
WEST BENGAL	1011.22	19.15
UTTAR PRADESH	629.38	11.92
BIHAR	469.38	8.89
CHHATTISGARH	372.68	7.06
MP	321.26	6.08
RAJASTHAN	308.45	5.84
SEMBCORP	182.81	3.46
JINDAL STAGE-II	140.70	2.66
DELHI	137.61	2.61
JINDAL POWER	135.25	2.56
ODISHA	134.13	2.54
TEESTA STG3	115.93	2.20
ESSAR POWER	110.07	2.08
KARNATAKA	109.27	2.07
KERALA	101.65	1.93
RKM POWER	85.55	1.62
ACBIL	73.76	1.40
NTPC STATIONS-SR	68.80	1.30
DB POWER	61.88	1.17
HIMACHAL PRADESH	61.83	1.17
ASSAM	59.65	1.13
JAYPEE NIGRIE	58.98	1.12
MB POWER	58.49	1.11
NLC	39.12	0.74
TELANGANA	37.98	0.72
HARYANA	37.35	0.71
GOA	29.14	0.55
MARUTI COAL	26.28	0.50
ONGC PALATANA	25.70	0.49
MAHARASHTRA	22.51	0.43
JHARKHAND	21.46	0.41
ADHUNIK POWER LTD	19.50	0.37
GMR KAMALANGA	18.93	0.36
DVC	18.55	0.35
ANDHRA PRADESH	17.91	0.34
TRIPURA	16.86	0.32
TASHIDENG HEP	15.78	0.30
AD HYDRO	14.56	0.28
JORETHANG	13.94	0.26
KARCHAM WANGTOO	13.29	0.25
JITPL	10.81	0.20
NEEPCO STATIONS	10.29	0.19
ARUNACHAL PRADESH	9.45	0.18
SAINJ HEP	8.20	0.16
JHABUA POWER_MP	7.86	0.15
TAMIL NADU	5.59	0.11
RGPPL	4.98	0.09
J & K	4.26	0.08

BALCO	3.03	0.06
GUJARAT	3.01	0.06
SINGOLI BHATWARI HEP	2.32	0.04
RPREL	1.83	0.03
RENEWJH_SLR	1.78	0.03
CHUZACHEN HEP	1.46	0.03
SORANG HEP	1.21	0.02
NAGALAND	1.09	0.02
DIKCHU HEP	1.08	0.02
RENEWURJA_SLR	0.79	0.02
REGL	0.77	0.01
MANIPUR	0.63	0.01
LANCO BUDHIL	0.38	0.01
DHARIWAL POWER	0.38	0.01
ADANI_SLR	0.33	0.01
PUNJAB	0.30	0.01
AHEJ3L_SOLAR	0.27	0.01
SIKKIM	0.26	0.005
AHEJ2L_SOLAR	0.09	0.002
NTPC STATIONS-NER	0.09	0.002
DADRA & NAGAR HAVELI	0.05	0.001
OSTRO	0.04	0.001
ADANI_WIND	0.03	0.0005
NTPC STATIONS-ER	0.02	0.0004
CONTINNUM PT	0.003	0.00005
UTTARAKHAND	0.002	0.00003
Total	5280.25	100.00
Volume sold by top 5 Regional Entities	2803.92	53.10

Table-16: VOLUME OF ELECTRICITY PURCHASED IN DAY AHEAD MARKET THROUGH POWER EXCHANGES, JANUARY 2022		
Name of the Entity	Volume of Purchase (MUs)	% of Volume
GUJARAT	701.74	13.29
ANDHRA PRADESH	557.76	10.56
TELANGANA	554.31	10.50
J & K	483.65	9.16
TAMIL NADU	437.88	8.29
MAHARASHTRA	416.68	7.89
PUNJAB	388.11	7.35
UTTARAKHAND	308.46	5.84
RAJASTHAN	251.53	4.76
UTTAR PRADESH	241.28	4.57
NEPAL(NVVN)	157.94	2.99
HARYANA	148.36	2.81
ODISHA	124.24	2.35
DGPCL Bhutan	101.28	1.92
DELHI	96.91	1.84
ASSAM	49.78	0.94
HIMACHAL PRADESH	49.78	0.94
KARNATAKA	46.96	0.89
MP	46.53	0.88
AMPS Hazira	31.47	0.60
KERALA	22.92	0.43
MEGHALAYA	18.80	0.36
DADRA & NAGAR HAVELI	18.76	0.36
DAMAN AND DIU	7.00	0.13
CHANDIGARH	5.61	0.11
WEST BENGAL	4.08	0.08
BIHAR	2.79	0.05
GOA	2.42	0.05
JHARKHAND	1.52	0.03
MANIPUR	0.78	0.01
SIKKIM	0.56	0.01
NEP	0.36	0.01
TOTAL	5280.25	100.00
Volume purchased by top 5 Regional Entities	2735.35	51.80

Table-17: VOLUME OF ELECTRICITY SOLD IN GREEN DAY AHEAD MARKET THROUGH POWER EXCHANGES, JANUARY 2022		
Name of the Entity	Volume of Sale (MUs)	% of Volume
KARNATAKA	121.41	61.21
MP	12.17	6.13
ANDHRA PRADESH	10.10	5.09
ADANIHB_SLR	9.99	5.04
AHEJ3L_SOLAR	8.31	4.19
RENEWJH_SLR	8.19	4.13
RENEWURJA_SLR	5.38	2.71
TELANGANA	4.93	2.48
ADANI_WIND	4.80	2.42
AHEJ2L_SOLAR	4.54	2.29
J & K	2.16	1.09
HIMACHAL PRADESH	1.54	0.77
RAJASTHAN	1.30	0.65
OSTRO	1.25	0.63
AZURE43_SLR	1.01	0.51
AYANA_RP1	0.55	0.28
NTPC STATIONS-SR	0.29	0.15
UTTARAKHAND	0.22	0.11
CONTINNUM PT	0.14	0.07
HARYANA	0.08	0.04
Total	198.35	100.00
Volume sold by top 5 Regional Entities	161.97	81.66

Table-18: VOLUME OF ELECTRICITY PURCHASED IN GREEN DAY AHEAD MARKET THROUGH POWER EXCHANGES, JANUARY 2022		
Name of the Entity	Volume of Purchase (MUs)	% of Volume
DADRA & NAGAR HAVELI	57.77	29.12
ODISHA	45.66	23.02
ASSAM	32.23	16.25
WEST BENGAL	17.55	8.85
MAHARASHTRA	11.89	5.99
DELHI	11.87	5.98
KERALA	5.46	2.75
KARNATAKA	3.58	1.81
TAMIL NADU	3.46	1.74
PUNJAB	2.79	1.40
DAMAN AND DIU	2.50	1.26
TELANGANA	1.27	0.64
HARYANA	1.16	0.59
UTTAR PRADESH	0.80	0.40
ANDHRA PRADESH	0.21	0.11
BIHAR	0.08	0.04
GUJARAT	0.06	0.03
MP	0.01	0.01
TOTAL	198.35	100.00
Volume purchased by top 5 Regional Entities	165.09	83.23

Table-19: VOLUME OF ELECTRICITY SOLD IN REAL TIME MARKET THROUGH POWER EXCHANGES, JANUARY 2022

Name of the Entity	Volume of Sale (MUs)	% of Volume
MP	277.77	17.63
BIHAR	160.78	10.21
RAJASTHAN	114.69	7.28
UTTAR PRADESH	113.80	7.23
WEST BENGAL	99.95	6.35
ODISHA	99.91	6.34
CHHATTISGARH	70.04	4.45
NLC	58.09	3.69
DELHI	48.97	3.11
SASAN UMPP	48.10	3.05
NEEPCO STATIONS	42.29	2.68
KARNATAKA	40.90	2.60
TRIPURA	39.75	2.52
KERALA	39.73	2.52
RKM POWER	38.50	2.44
TELANGANA	31.38	1.99
SEMBCORP	27.59	1.75
NTPC STATIONS-SR	25.37	1.61
JINDAL STAGE-II	20.48	1.30
HIMACHAL PRADESH	19.09	1.21
JINDAL POWER	11.17	0.71
NTPC STATIONS-WR	11.09	0.70
MANIPUR	11.09	0.70
MAHARASHTRA	10.99	0.70
J & K	10.74	0.68
MB POWER	10.21	0.65
NTPC STATIONS-NER	9.39	0.60
JHARKHAND	8.53	0.54
ASSAM	8.24	0.52
DB POWER	7.54	0.48
JHABUA POWER_MP	7.27	0.46
SIKKIM	5.41	0.34
EMCO	5.03	0.32
NTPC STATIONS-ER	4.49	0.29
GUJARAT	4.28	0.27
MTPS II	4.07	0.26
ANDHRA PRADESH	3.99	0.25
RENEWURJA_SLR	2.37	0.15
GMR KAMALANGA	2.25	0.14
RPREL	2.02	0.13
JITPL	1.94	0.12
HARYANA	1.63	0.10
RENEWJH_SLR	1.57	0.10
BALCO	1.56	0.10
ONGC PALATANA	1.54	0.10
NTPC STATIONS-NR	1.48	0.09
SORANG HEP	1.28	0.08
SINGOLI BHATWARI HEP	1.20	0.08

PUNJAB	0.75	0.05
DVC	0.73	0.05
DADRA & NAGAR HAVELI	0.73	0.05
ACBIL	0.63	0.04
TAMIL NADU	0.54	0.03
AYANA_RP1	0.45	0.03
RGPPL_Others	0.29	0.02
RGPPL	0.28	0.02
JORETHANG	0.27	0.02
OSTRO	0.23	0.01
KARCHAM WANGTOO	0.19	0.01
DHARIWAL POWER	0.15	0.01
SAINJ HEP	0.09	0.01
SKS POWER	0.09	0.01
LANCO BUDHIL	0.07	0.005
MARUTI COAL	0.07	0.004
TASHIDENG HEP	0.02	0.001
NAGALAND	0.01	0.001
AD HYDRO	0.01	0.001
UTTARAKHAND	0.01	0.001
Total	1575.13	100.00
Volume sold by top 5 Regional Entities	766.98	48.69

Table-20: VOLUME OF ELECTRICITY PURCHASED IN REAL TIME MARKET THROUGH POWER EXCHANGES, JANUARY 2022		
Name of the Entity	Volume of Purchase (MUs)	% of Volume
J & K	437.12	27.75
TELANGANA	205.60	13.05
ANDHRA PRADESH	111.50	7.08
MAHARASHTRA	106.40	6.76
GUJARAT	104.43	6.63
ODISHA	93.16	5.91
RAJASTHAN	79.84	5.07
UTTAR PRADESH	76.84	4.88
PUNJAB	74.56	4.73
TAMIL NADU	74.19	4.71
DELHI	52.95	3.36
HARYANA	37.63	2.39
WEST BENGAL	34.26	2.17
ASSAM	28.84	1.83
HIMACHAL PRADESH	10.03	0.64
UTTARAKHAND	8.07	0.51
KARNATAKA	7.68	0.49
MANIPUR	7.56	0.48
KERALA	6.24	0.40
BIHAR	5.61	0.36
MP	3.98	0.25
MEGHALAYA	2.10	0.13
SIKKIM	1.46	0.09
AMPS Hazira	1.33	0.08
GOA	0.91	0.06
DADRA & NAGAR HAVELI	0.52	0.03
DAMAN AND DIU	0.51	0.03
MARUTI COAL	0.49	0.03
RAIL	0.43	0.03
JINDAL POWER	0.40	0.03
JHARKHAND	0.20	0.01
ARUNACHAL PRADESH	0.18	0.01
DVC	0.08	0.005
CHHATTISGARH	0.03	0.002
NAGALAND	0.02	0.002
TOTAL	1575.13	100.00
Volume purchased by top 5 Regional Entities	965.05	61.27

Table-21: VOLUME OF ELECTRICITY UNDER DRAWAL (EXPORTED) THROUGH DSM, JANUARY 2022

Name of the Entity	Volume of Under drawal (MUs)	% of Volume
NTPC STATIONS-WR	136.10	6.36
MAHARASHTRA	135.61	6.34
UTTAR PRADESH	114.79	5.36
GUJARAT	103.94	4.86
MP	86.64	4.05
KARNATAKA	80.08	3.74
NHPC STATIONS	79.14	3.70
PUNJAB	71.52	3.34
RAJASTHAN	71.41	3.34
TELANGANA	63.53	2.97
TAMIL NADU	61.30	2.86
NTPC STATIONS-ER	49.65	2.32
NTPC STATIONS-NR	41.46	1.94
SASAN UMPP	40.57	1.90
MANGDECHU HEP	37.20	1.74
NTPC STATIONS-SR	35.09	1.64
HARYANA	35.00	1.64
ODISHA	33.85	1.58
ANDHRA PRADESH	31.22	1.46
NLC	28.53	1.33
DELHI	28.35	1.32
J & K	27.44	1.28
ESSAR POWER	26.79	1.25
WEST BENGAL	25.69	1.20
BIHAR	25.50	1.19
KERALA	24.18	1.13
JHARKHAND	23.80	1.11
CHHATTISGARH	22.80	1.07
AGEMPL BHUJ	21.74	1.02
HIMACHAL PRADESH	19.54	0.91
GIWEL_BHUJ	17.81	0.83
UTTARAKHAND	14.87	0.69
DVC	14.35	0.67
NEPAL(NVVN)	13.11	0.61
IGSTPS	11.71	0.55
SB_SLR	11.69	0.55
INOX_BHUJ	11.62	0.54
BBMB	11.58	0.54
NEEPCO STATIONS	11.25	0.53
PONDICHERRY	11.13	0.52
TRIPURA	10.97	0.51
ASSAM	10.90	0.51
ALFANAR_BHUJ	10.45	0.49
OSTRO	10.37	0.48
AHEJ4L_SOLAR	10.32	0.48
RENEW_BHACHAU	9.66	0.45
ADANIHB_SLR	9.39	0.44
NPGC	9.03	0.42
KARCHAM WANGTOO	8.39	0.39
AZURE43_SLR	8.15	0.38
AVAADASN_SLR	8.15	0.38
RAP C	7.99	0.37
CHANDIGARH	7.97	0.37
RENEW_BHUJ	7.68	0.36
RKM POWER	7.58	0.35
CLEAN_SLR	7.50	0.35
MAITHON POWER LTD	6.65	0.31
SIKKIM	6.61	0.31
BRBCL,NABINAGAR	6.46	0.30
LANKO_AMK	6.19	0.29
NJPC	5.85	0.27
MB POWER	5.67	0.27
AYANA_RP1	5.66	0.26
RENEWURJA_SLR	5.28	0.25
BETAM_TCN	5.26	0.25

GIWEL_TCN	5.21	0.24
JHABUA POWER_MP	4.70	0.22
AZURE_SLR	4.68	0.22
GOA	4.66	0.22
GMR KAMALANGA	4.53	0.21
ACBIL	4.51	0.21
JAYPEE NIGRIE	4.50	0.21
SB6_POKARAN	4.31	0.20
RENEWSW	4.09	0.19
EDEN_SLR	4.07	0.19
RENEW_SLR_BKN	3.98	0.19
RENEWJH_SLR	3.92	0.18
RAMPUR HEP	3.83	0.18
RAIL	3.76	0.18
JINDAL POWER	3.75	0.18
ARERJL_SLR	3.73	0.17
NTPC_ANTP	3.54	0.17
MIZORAM	3.53	0.16
DADRA & NAGAR HAVELI	3.39	0.16
RENEWSW_SLR	3.35	0.16
DGPCL Bhutan	3.34	0.16
MTPS II	3.33	0.16
ACME_SLR	3.27	0.15
NSPCL	3.25	0.15
JINDAL STAGE-II	3.19	0.15
ARINSUM_RUMS	3.16	0.15
RAP B	3.13	0.15
AHEJ3L_SOLAR	3.00	0.14
ORANGE_TCN	2.99	0.14
MEGHALAYA	2.85	0.13
SBG_NPK	2.77	0.13
MRPL	2.72	0.13
ACME_RUMS	2.72	0.13
RPREL	2.66	0.12
MAHINDRA_RUMS	2.64	0.12
KOTESHWAR	2.62	0.12
SBSR_SLR	2.59	0.12
MANIPUR	2.54	0.12
DB POWER	2.52	0.12
JITPL	2.45	0.11
AVADARJHN_SLR	2.43	0.11
TEHRI	2.36	0.11
MYTRAH_TCN	2.34	0.11
SEMBCORP	2.33	0.11
SBG_PVGD	2.27	0.11
NETCL VALLUR	2.26	0.11
BALCO	2.22	0.10
AZURE41_SLR	2.14	0.10
THERMAL POWERTECH	2.12	0.10
TEESTA HEP	2.11	0.10
KSK MAHANADI	2.10	0.10
SPRING_PUGALUR	2.01	0.09
TATA_ANTP	1.92	0.09
AHEJ2L_SOLAR	1.90	0.09
NTPC STATIONS-NER	1.84	0.09
ADHUNIK POWER LTD	1.83	0.09
TATA_SLR	1.65	0.08
RGPPL	1.58	0.07
AZURE34_SLR	1.57	0.07
ADY1_PVGD	1.52	0.07
ADY2_PVGD	1.52	0.07
ADY13_PVGD	1.52	0.07
ADY10_PVGD	1.52	0.07
TATA_PVGD	1.50	0.07
ESPL_RADHANESDA	1.45	0.07
ADY6_PVGD	1.43	0.07
ADY3_PVGD	1.43	0.07
SPRNG_NPKUNTA	1.42	0.07

FORTUM2_PVGD	1.34	0.06
CGPL	1.33	0.06
EMCO	1.32	0.06
FORTUM1_PVGD	1.29	0.06
NAGALAND	1.22	0.06
NEP	1.20	0.06
AHSP_ANTP	1.14	0.05
BANGLADESH	1.12	0.05
KURICHU HEP	1.11	0.05
AYANA_NPKUNTA	1.09	0.05
ABSP_ANTP	1.07	0.05
TEESTA STG3	1.07	0.05
DAMAN AND DIU	1.05	0.05
ONGC PALATANA	1.05	0.05
TPREL_RADHANESDA	1.01	0.05
ASEJTL_SLR	0.98	0.05
OSTRO Hiriyur	0.94	0.04
GIPCL_RADHANESDA	0.93	0.04
DHARIWAL POWER	0.92	0.04
RANGIT HEP	0.91	0.04
AZURE_ANTP	0.90	0.04
ARUNACHAL PRADESH	0.88	0.04
PARAM_PVGD	0.80	0.04
LOKTAK	0.75	0.03
BARC	0.74	0.03
AKSP_ANTP	0.73	0.03
FRV_NPK	0.72	0.03
SAINJ HEP	0.68	0.03
RANGANADI HEP	0.67	0.03
AD HYDRO	0.67	0.03
AVAADA2_PVGD	0.67	0.03
AVAADA1_PVGD	0.64	0.03
RENEW_SLR	0.63	0.03
FRV_ANTP	0.60	0.03
AZURE_PVGD	0.58	0.03
SORANG HEP	0.47	0.02
CHUZACHEN HEP	0.44	0.02
DIKCHU HEP	0.44	0.02
PARE HEP	0.42	0.02
RONGNICHU HEP	0.41	0.02
SINGOLI BHATWARI HEP	0.39	0.02
NAPP	0.37	0.02
LANCO BUDHIL	0.34	0.02
TASHIDENG HEP	0.33	0.02
NFF	0.28	0.01
YARROW_PVGD	0.24	0.01
NTPL	0.23	0.01
DOYANG HEP	0.23	0.01
VINDHYACHAL HVDC	0.22	0.01
RENEW_PVGD	0.21	0.01
AKS_PVGD	0.20	0.01
ARS_PVGD	0.19	0.01
JORETHANG	0.11	0.005
KREDL_PVGD	0.10	0.005
SKS POWER	0.09	0.004
BHADRAVATHI HVDC	0.09	0.004
IL&FS	0.02	0.001
HVDC CHAMPA	0.01	0.001
DCPP	0.01	0.0004
HVDC RAIGARH	0.00	0.0001
HVDC ALPD	0.001	0.0001
DAGACHU	0.001	0.0001
KAPP 3&4	0.00001	0.0000002
Total	2140.40	100.00
Volume Exported by top 5 Regional Entities	577.08	26.96

Table-22: VOLUME OF ELECTRICITY OVER DRAWAL (IMPORTED) THROUGH DSM, JANAUARY 2022

Name of the Entity	Volume of Over drawal (MUs)	% of Volume
NTPC STATIONS-WR	126.83	6.34
RAJASTHAN	100.24	5.01
NTPC STATIONS-NR	91.92	4.60
CHUKHA HEP	73.53	3.68
GUJARAT	63.62	3.18
NTPC STATIONS-ER	61.98	3.10
UTTAR PRADESH	61.64	3.08
HARYANA	60.67	3.03
TAMIL NADU	56.26	2.81
ANDHRA PRADESH	55.83	2.79
KARNATAKA	52.50	2.62
MP	47.80	2.39
DVC	44.62	2.23
UTTARAKHAND	42.38	2.12
ODISHA	40.36	2.02
TALA HEP	40.26	2.01
BIHAR	38.99	1.95
NTPC STATIONS-SR	38.76	1.94
TELANGANA	33.59	1.68
HIMACHAL PRADESH	32.45	1.62
PUNJAB	30.52	1.53
WEST BENGAL	28.63	1.43
J & K	28.48	1.42
MAHARASHTRA	27.57	1.38
NLC	25.65	1.28
CHHATTISGARH	23.57	1.18
ESSAR POWER	22.64	1.13
KERALA	20.95	1.05
DELHI	20.71	1.04
THERMAL POWERTECH	17.89	0.89
MANGDECHU HEP	17.77	0.89
JHARKHAND	16.59	0.83
BALCO	14.76	0.74
NETCL VALLUR	14.11	0.71
IGSTPS	13.98	0.70
CGPL	12.55	0.63
SEMBCORP	10.87	0.54
AGEMPL BHUJ	10.30	0.51
ARUNACHAL PRADESH	10.18	0.51
NHPC STATIONS	10.18	0.51
ASSAM	9.95	0.50
RPREL	9.92	0.50
IL&FS	9.48	0.47
NTPL	9.41	0.47
ORANGE_TCN	9.35	0.47
DAMAN AND DIU	9.32	0.47
GIWEL_BHUJ	8.70	0.43
AZURE43_SLR	8.46	0.42
DADRA & NAGAR HAVELI	7.80	0.39
GIWEL_TCN	7.76	0.39
KAPP 3&4	7.69	0.38
KARCHAM WANGTOO	7.62	0.38
GOA	7.54	0.38
MYTRAH_TCN	7.28	0.36
DGPCL Bhutan	6.87	0.34
NSPCL	6.82	0.34
KURICHU HEP	6.71	0.34
CHANDIGARH	6.36	0.32
NTPC STATIONS-NER	6.20	0.31
JHABUA POWER_MP	6.13	0.31
RKM POWER	6.09	0.30
RENEW_BHUJ	5.95	0.30
TATA_SLR	5.90	0.29
NPGC	5.81	0.29
AYANA_RP1	5.74	0.29
RENEW_BHACHAU	5.72	0.29
ALFANAR_BHUJ	5.65	0.28
BETAM_TCN	5.53	0.28

RAP B	5.49	0.27
ADANIHB_SLR	5.43	0.27
JINDAL STAGE-II	5.33	0.27
DB POWER	5.16	0.26
ACME_RUMS	5.05	0.25
MEGHALAYA	5.03	0.25
JITPL	4.98	0.25
MB POWER	4.88	0.24
OSTRO	4.87	0.24
BRBCL,NABINAGAR	4.87	0.24
TEHRI	4.83	0.24
EMCO	4.79	0.24
RENEWURJA_SLR	4.74	0.24
DAGACHU	4.72	0.24
ARINSUM_RUMS	4.55	0.23
RGPPL	4.51	0.23
MAHINDRA_RUMS	4.46	0.22
MAITHON POWER LTD	4.32	0.22
RAIL	4.19	0.21
ARERJL_SLR	3.98	0.20
AHEJ3L_SOLAR	3.89	0.19
BANGLADESH	3.75	0.19
INOX_BHUJ	3.74	0.19
NTPC_ANTP	3.61	0.18
CLEAN_SLR	3.51	0.18
BBMB	3.30	0.16
SB6_POKARAN	3.28	0.16
RENEWJH_SLR	3.15	0.16
COASTGEN	3.15	0.16
RENEWSW	3.09	0.15
RENEW_SLR_BKN	3.08	0.15
JINDAL POWER	3.07	0.15
SBG_NPK	3.01	0.15
AVADARJHN_SLR	2.98	0.15
PONDICHERRY	2.90	0.15
AVAADASN_SLR	2.85	0.14
SIKKIM	2.85	0.14
MRPL	2.72	0.14
TEESTA STG3	2.68	0.13
AHEJ4L_SOLAR	2.53	0.13
NEP	2.53	0.13
GMR KAMALANGA	2.51	0.13
RENEWSW_SLR	2.49	0.12
NAPP	2.48	0.12
MTPS II	2.47	0.12
KSK MAHANADI	2.44	0.12
SBG_PVGD	2.42	0.12
NEPAL(NVVN)	2.42	0.12
NEEPCO STATIONS	2.39	0.12
MANIPUR	2.30	0.11
AZURE41_SLR	2.27	0.11
ACME_SLR	2.20	0.11
EDEN_SLR	2.18	0.11
ESPL_RADHANESDA	2.13	0.11
JORETHANG	2.04	0.10
TASHIDENG HEP	2.01	0.10
AHEJ2L_SOLAR	1.96	0.10
ACBIL	1.96	0.10
DHARIWAL POWER	1.84	0.09
SKS POWER	1.79	0.09
GIPCL_RADHANESDA	1.76	0.09
RAP C	1.76	0.09
OSTRO Hiriyur	1.72	0.09
RANGANADI HEP	1.62	0.08
SPRING_PUGALUR	1.58	0.08
ADHUNIK POWER LTD	1.57	0.08
NAGALAND	1.56	0.08
TPREL_RADHANESDA	1.55	0.08
AZURE34_SLR	1.52	0.08
MIZORAM	1.39	0.07

NJPC	1.36	0.07
SBSR_SLR	1.19	0.06
TRIPURA	1.19	0.06
TATA_ANTP	1.19	0.06
FORTUMI_PVGD	1.16	0.06
LANKO_AMK	1.14	0.06
AKSP_ANTP	1.11	0.06
AZURE_SLR	1.03	0.05
DGEN MEGA POWER	1.00	0.05
ASEJTL_SLR	0.97	0.05
TATA_PVGD	0.92	0.05
ABSP_ANTP	0.90	0.05
AHSP_ANTP	0.90	0.04
KOTESHWAR	0.82	0.04
SB_SLR	0.78	0.04
ADY6_PVGD	0.72	0.04
ADY3_PVGD	0.72	0.04
SASAN UMPP	0.66	0.03
SPRNG_NPKUNTA	0.62	0.03
AD HYDRO	0.62	0.03
RENEW_SLR	0.61	0.03
MEENAKSHI	0.54	0.03
AYANA_NPKUNTA	0.52	0.03
AZURE_ANTP	0.50	0.03
HVDC PUS	0.45	0.02
LANCO BUDHIL	0.43	0.02
HVDC CHAMPA	0.43	0.02
ADY10_PVGD	0.43	0.02
ADY2_PVGD	0.43	0.02
ADY13_PVGD	0.43	0.02
ADY1_PVGD	0.43	0.02
SORANG HEP	0.40	0.02
RAMPUR HEP	0.39	0.02
SIMHAPURI	0.39	0.02
DIKCHU HEP	0.38	0.02
PARAM_PVGD	0.36	0.02
AVAADA1_PVGD	0.36	0.02
LANKO KONDAPALLI	0.34	0.02
RANGIT HEP	0.33	0.02
RONGNICHU HEP	0.32	0.02
FRV_ANTP	0.31	0.02
JAYPEE NIGRIE	0.30	0.01
FORTUM2_PVGD	0.29	0.01
AVAADA2_PVGD	0.27	0.01
HVDC RAIGARH	0.26	0.01
DOYANG HEP	0.25	0.01
ONGC PALATANA	0.25	0.01
CHUZACHEN HEP	0.24	0.01
TRN ENERGY	0.22	0.01
KREDL_PVGD	0.21	0.01
HVDC ALPD	0.21	0.01
NEF	0.19	0.01
SAINJ HEP	0.19	0.01
LOKTAK	0.18	0.01
AKS_PVGD	0.17	0.01
YARROW_PVGD	0.16	0.01
RENEW_PVGD	0.14	0.01
AZURE_PVGD	0.14	0.01
ARS_PVGD	0.14	0.01
FRV_NPK	0.13	0.01
PARE HEP	0.07	0.004
SINGOLI BHATWARI HEP	0.02	0.001
TEESTA HEP	0.02	0.001
DCPP	0.01	0.001
BHADRAVATHI HVDC	0.01	0.0003
BARC	0.01	0.0003
TOTAL	1999.92	100.00
Volume Imported by top 5 Regional Entities	456.14	22.81

Table-23: TOTAL VOLUME OF NET SHORT-TERM TRANSACTIONS OF ELECTRICITY (REGIONAL ENTITY-WISE), JANUARY 2022		
S. No.	Name of the Entity	Total volume of net short-term transactions of electricity*
1	GUJARAT	1599.95
2	J & K	847.17
3	ANDHRA PRADESH	758.55
4	TELANGANA	664.46
5	TAMIL NADU	638.85
6	UTTARAKHAND	609.87
7	MAHARASHTRA	523.11
8	MP	507.16
9	HIMACHAL PRADESH	453.15
10	RAJASTHAN	435.98
11	AMPS Hazira	307.08
12	ODISHA	266.62
13	JHARKHAND	150.52
14	NEPAL(NVVN)	147.24
15	MEGHALAYA	113.16
16	DGPCL Bhutan	104.82
17	DADRA & NAGAR HAVELI	84.15
18	CHUKHA HEP	73.53
19	HARYANA	61.34
20	KERALA	50.52
21	NTPC STATIONS-NR	48.98
22	ASSAM	44.45
23	NEP	42.61
24	TALA HEP	40.26
25	NCR ALLAHABAD	37.20
26	MANIPUR	23.93
27	ARUNACHAL PRADESH	22.72
28	SIKKIM	19.40
29	DAMAN AND DIU	18.28
30	THERMAL POWERTECH	15.77
31	NETCL VALLUR	11.84
32	CGPL	11.22
33	IL&FS	9.46
34	NTPL	9.17
35	NTPC STATIONS-ER	7.82
36	KAPP 3&4	7.69
37	ORANGE_TCN	6.36
38	KURICHU HEP	5.59
39	MYTRAH_TCN	4.95
40	CHANDIGARH	4.00
41	NSPCL	3.58
42	COASTGEN	3.15
43	BANGLADESH	2.63
44	GIWEL_TCN	2.54
45	GOA	2.52
46	TEHRI	2.46
47	RAP B	2.36
48	ACME_RUMS	2.33
49	IGSTPS	2.27
50	NAPP	2.11
51	MAHINDRA_RUMS	1.82
52	SKS POWER	1.61
53	BALCO	1.54
54	ARINSUM_RUMS	1.40
55	DGEN MEGA POWER	1.00
56	RANGANADI HEP	0.95
57	RAIL	0.86
58	GIPCL_RADHANESDA	0.83
59	OSTRO Hiriyur	0.78
60	ESPL_RADHANESDA	0.68
61	AVADARJHN_SLR	0.55
62	TPREL_RADHANESDA	0.54

63	MEENAKSHI	0.54
64	HVDC PUS	0.45
65	HVDC CHAMPA	0.41
66	DHARIWAL POWER	0.40
67	SIMHAPURI	0.39
68	AKSP_ANTP	0.37
69	LANKO KONDAPALLI	0.34
70	KSK MAHANADI	0.34
71	BETAM_TCN	0.27
72	HVDC RAIGARH	0.26
73	SBG_NPK	0.24
74	TRN ENERGY	0.22
75	HVDC ALPD	0.21
76	SBG_PVGD	0.16
77	AZURE41_SLR	0.13
78	KREDL_PVGD	0.11
79	NTPC_ANTP	0.07
80	DOYANG HEP	0.02
81	MRPL	0.00
82	DCPP	0.00
83	RENEW_SLR	-0.01
84	AKS_PVGD	-0.03
85	AZURE34_SLR	-0.0449
86	ARS_PVGD	-0.05
87	RENEW_PVGD	-0.07
88	YARROW_PVGD	-0.07
89	RONGNICHU HEP	-0.08
90	BHADRAVATHI HVDC	-0.09
91	NFF	-0.09
92	FORTUM1_PVGD	-0.12
93	ABSP_ANTP	-0.16
94	VINDHYACHAL HVDC	-0.22
95	AHSP_ANTP	-0.25
96	AVAADA1_PVGD	-0.28
97	FRV_ANTP	-0.29
98	RGPPL_Others	-0.29
99	ADANI_SLR	-0.33
100	PARE HEP	-0.35
101	LANCO BUDHIL	-0.36
102	AVAADA2_PVGD	-0.40
103	AZURE_ANTP	-0.40
104	SPRING_PUGALUR	-0.43
105	PARAM_PVGD	-0.43
106	AZURE_PVGD	-0.44
107	LOKTAK	-0.57
108	AYANA_NPKUNTA	-0.57
109	RANGIT HEP	-0.58
110	TATA_PVGD	-0.58
111	FRV_NPK	-0.60
112	ADY6_PVGD	-0.71
113	ADY3_PVGD	-0.71
114	TATA_ANTP	-0.73
115	NAGALAND	-0.74
116	BARC	-0.74
117	SPRNG_NPKUNTA	-0.80
118	RENEW_SLR_BKN	-0.91
119	RENEWSW	-1.00
120	SB6_POKARAN	-1.03
121	FORTUM2_PVGD	-1.05
122	ACME_SLR	-1.07
123	ADY10_PVGD	-1.09
124	ADY13_PVGD	-1.09
125	ADY2_PVGD	-1.09
126	ADY1_PVGD	-1.10
127	REGL	-1.13
128	AHEJ3L_WIND	-1.37

129	SBSR_SLR	-1.40
130	EMCO	-1.57
131	BRBCL,NABINAGAR	-1.59
132	CHUZACHEN HEP	-1.66
133	RENEW_BHUI	-1.73
134	KOTESHWAR	-1.80
135	EDEN_SLR	-1.89
136	TEESTA HEP	-2.09
137	AHEJ2L_WIND	-2.10
138	MIZORAM	-2.14
139	RGPPL	-2.33
140	MAITHON POWER LTD	-2.34
141	AZURE43_SLR	-2.48
142	CONTINNUM PT	-2.54
143	NPGC	-3.22
144	RAMPUR HEP	-3.44
145	ADANIHB_WIND	-3.61
146	AZURE_SLR	-3.65
147	SINGOLI BHATWARI HEP	-3.89
148	RENEW_BHACHAU	-3.94
149	CLEAN_SLR	-3.99
150	ARERJI_SLR	-4.19
151	NJPC	-4.49
152	SORANG HEP	-4.74
153	ALFANAR_BHUI	-4.79
154	MTPS II	-4.92
155	NTPC STATIONS-NER	-5.11
156	RAP C	-6.23
157	INOX_BHUI	-7.88
158	OSTRO	-8.04
159	PONDICHERRY	-8.23
160	BBMB	-8.28
161	DIKCHU HEP	-8.77
162	SAINJ HEP	-8.79
163	GIWEL_BHUI	-9.11
164	ASEJTL_SLR	-9.40
165	AHEJ4L_WIND	-10.08
166	SB_SLR	-10.91
167	AGEMPL BHUI	-11.45
168	ADANI_WIND	-12.19
169	RENEWJH_SLR	-12.31
170	LANKO_AMK	-13.24
171	JORETHANG	-13.47
172	KARCHAM WANGTOO	-14.24
173	AD HYDRO	-14.62
174	TASHIDENG HEP	-15.44
175	DAGACHU	-19.41
176	MANGDECHU HEP	-19.44
177	NTPC STATIONS-WR	-20.36
178	AHEJ2L_SOLAR	-21.58
179	AVAADASN_SLR	-22.35
180	AYANA_RP1	-25.43
181	MARUTI COAL	-25.87
182	TATA_SLR	-26.98
183	AHEJ3L_SOLAR	-35.14
184	ONGC PALATANA	-36.92
185	JHABUA POWER_MP	-37.37
186	RENEWSW_SLR	-42.50
187	RENEWURJA_SLR	-49.37
188	GMR KAMALANGA	-49.46
189	AHEJ4L_SOLAR	-52.17
190	TRIPURA	-66.40
191	PUNJAB	-67.40
192	NHPC STATIONS	-68.96
193	ADANIHB_SLR	-70.30
194	ACBIL	-76.94

195	NEEPCO STATIONS	-79.60
196	SASAN UMPP	-88.02
197	NTPC STATIONS-SR	-90.81
198	NLC	-100.09
199	DVC	-100.44
200	TEESTA STG3	-137.44
201	ADHUNIK POWER LTD	-175.54
202	ESSAR POWER	-196.80
203	JINDAL POWER	-198.68
204	MB POWER	-200.41
205	JAYPEE NIGRIE	-224.25
206	JINDAL STAGE-II	-253.55
207	DELHI	-323.49
208	KARNATAKA	-363.94
209	SEBPCORP	-384.71
210	DB POWER	-411.58
211	RKM POWER	-439.10
212	JITPL	-467.67
213	CHHATTISGARH	-577.15
214	BIHAR	-597.37
215	RPREL	-695.50
216	UTTAR PRADESH	-794.90
217	WEST BENGAL	-923.92
* Total volume of net short-term transactions of electricity includes net of transactions of electricity through bilateral, power exchange and DSM		
(-) indicates sale and (+) indicates purchase		

Table-24: DETAILS OF CONGESTION IN POWER EXCHANGES, JANUARY 2022							
	Details of Congestion	Day Ahead Market		Green Day Ahead Market		Real Time Market	
		IEX	PXIL	IEX	PXIL	IEX	PXIL
A	Unconstrained Cleared Volume (MUs)	5279.69	0.56	198.35	0.00	1575.134	0.00
B	Actual Cleared Volume and hence scheduled (MUs)	5279.69	0.56	198.35	0.00	1575.129	0.00
C	Volume of electricity that could not be cleared and hence not scheduled because of congestion (MUs)	0.00	0.00	0.00	0.00	0.005	0.00
D	Volume of electricity that could not be cleared and hence not scheduled because of reasons other than congestion (MUs) *	0.00	0.00	0.00	0.00	0.00	0.00
E	Volume of electricity that could not be cleared as % to Unconstrained Cleared Volume	0.00%	0.00%	0.00%	0.00%	0.0003%	0.00%
F	Percentage of the time congestion occurred during the month (Number of hours congestion occurred/Total number of hours in the month)	0.00%	0.00%	0.00%	0.00%	0.10%	0.00%
G	Congestion occurrence (%) time block wise						
	0.00 - 6.00 hours	0.00%	0.00%	0.00%	0.00%	0.00%	0.00%
	6.00 - 12.00 hours	0.00%	0.00%	0.00%	0.00%	0.00%	0.00%
	12.00 - 18.00 hours	0.00%	0.00%	0.00%	0.00%	0.00%	0.00%
	18.00 - 24.00 hours	0.00%	0.00%	0.00%	0.00%	100.00%	0.00%

* This power would have been scheduled had there been no congestion

Source: IEX, PXIL & NLDC

**Table-25: VOLUME OF SHORT-TERM TRANSACTIONS OF ELECTRICITY IN INDIA (DAY-WISE)
(MUs), JANUARY 2022**

Date	Bilateral		Day Ahead Market [#]		Green Day Ahead Market [#]		Real Time Market [#]		Deviation Settlement (Over Drawl + Under Generation)	Total Electricity Generation (MU) as given at CEA Website*
	Through Traders and PXs**	Direct	IEX	PXIL	IEX	PXIL	IEX	PXIL		
1-Jan-22	141.73	63.21	176.47	0.00	4.19	0.00	51.54	0.00	65.80	3433.70
2-Jan-22	137.04	63.09	176.31	0.00	4.19	0.00	43.56	0.00	66.91	3305.29
3-Jan-22	124.12	64.41	178.83	0.00	5.14	0.00	54.98	0.00	68.47	3515.11
4-Jan-22	112.82	62.59	173.18	0.00	4.37	0.00	54.86	0.00	66.66	3611.44
5-Jan-22	103.44	60.14	180.14	0.00	4.60	0.00	58.31	0.00	67.61	3610.58
6-Jan-22	101.17	60.39	196.08	0.03	6.02	0.00	57.73	0.00	67.26	3527.24
7-Jan-22	114.97	61.87	184.09	0.03	6.15	0.00	75.04	0.00	72.51	3516.25
8-Jan-22	117.40	59.80	182.78	0.04	6.16	0.00	57.56	0.00	74.51	3372.83
9-Jan-22	120.97	57.72	156.73	0.00	7.07	0.00	56.33	0.00	69.08	3252.90
10-Jan-22	110.21	60.02	185.54	0.00	7.69	0.00	54.47	0.00	68.14	3380.10
11-Jan-22	108.19	61.08	185.10	0.10	7.84	0.00	48.06	0.00	66.71	3396.02
12-Jan-22	107.89	60.67	177.50	0.10	7.90	0.00	56.28	0.00	68.37	3423.18
13-Jan-22	118.58	49.94	170.77	0.01	8.54	0.00	44.07	0.00	64.82	3414.97
14-Jan-22	121.37	49.86	136.74	0.00	7.74	0.00	52.36	0.00	66.19	3300.02
15-Jan-22	121.88	50.01	151.22	0.00	7.63	0.00	48.23	0.00	67.51	3251.35
16-Jan-22	116.34	48.35	136.89	0.00	7.10	0.00	51.79	0.00	65.44	3241.50
17-Jan-22	118.78	52.94	159.32	0.00	7.70	0.00	53.53	0.00	64.66	3439.60
18-Jan-22	128.56	53.91	174.18	0.02	7.20	0.00	49.65	0.00	61.31	3546.79
19-Jan-22	130.36	60.12	179.40	0.04	7.48	0.00	49.09	0.00	62.83	3618.24
20-Jan-22	134.69	60.24	164.63	0.04	7.36	0.00	59.10	0.00	64.12	3607.28
21-Jan-22	131.27	63.24	180.85	0.05	5.08	0.00	51.19	0.00	65.41	3618.97
22-Jan-22	126.49	62.25	169.68	0.03	5.18	0.00	49.82	0.00	78.03	3424.62
23-Jan-22	121.72	60.12	162.45	0.00	6.00	0.00	45.20	0.00	68.76	3377.22
24-Jan-22	130.85	62.13	181.38	0.00	5.47	0.00	41.29	0.00	65.35	3618.78
25-Jan-22	128.49	64.74	175.19	0.02	5.91	0.00	42.01	0.00	63.40	3661.85
26-Jan-22	128.48	64.80	146.41	0.01	6.17	0.00	42.40	0.00	63.46	3497.62
27-Jan-22	131.68	64.73	165.43	0.02	5.97	0.00	37.21	0.00	69.38	3558.75
28-Jan-22	131.31	65.30	166.02	0.02	6.89	0.00	40.55	0.00	66.82	3595.31
29-Jan-22	126.58	65.82	157.33	0.00	5.91	0.00	51.01	0.00	64.49	3643.68
30-Jan-22	121.46	64.48	163.76	0.00	7.22	0.00	49.31	0.00	62.79	3576.68
31-Jan-22	126.18	65.75	185.27	0.04	6.46	0.00	48.62	0.00	64.86	3713.51
Total	3795.00	1863.72	5279.69	0.56	198.35	0.00	1575.13	0.00	2071.65	108051.38

Source: NLDC

* Gross Electricity Generation excluding electricity generation from renewables and captive power plants.

** The volume of bilateral through PXs represents the volume through term-ahead contracts.

Scheduled volume of all the bid areas.

Table-26(a): PRICE OF SHORT-TERM TRANSACTIONS OF ELECTRICITY (DAY-WISE) (₹/kWh), JANUARY 2022												
Market Segment	Day ahead market of IEX			Day ahead market of PXIL			Green Day ahead market of IEX			Green Day ahead market of PXIL		
Date	Minimum ACP	Maximum ACP	Weighted Average Price*	Minimum ACP	Maximum ACP	Weighted Average Price*	Minimum ACP	Maximum ACP	Weighted Average Price*	Minimum ACP	Maximum ACP	Weighted Average Price*
1-Jan-22	1.80	5.77	3.47	-	-	-	3.32	6.00	4.16	-	-	-
2-Jan-22	1.90	4.99	3.15	-	-	-	3.55	5.20	4.08	-	-	-
3-Jan-22	1.62	6.40	3.65	-	-	-	3.90	5.20	4.37	-	-	-
4-Jan-22	1.60	6.35	3.82	-	-	-	4.00	5.50	4.41	-	-	-
5-Jan-22	1.70	7.52	3.78	-	-	-	1.50	5.37	4.42	-	-	-
6-Jan-22	1.80	8.03	3.58	3.99	3.99	3.99	1.00	5.50	3.82	-	-	-
7-Jan-22	1.74	8.00	3.37	3.99	3.99	3.99	2.82	5.50	4.20	-	-	-
8-Jan-22	1.64	6.10	3.32	3.99	4.99	4.13	2.62	5.50	4.41	-	-	-
9-Jan-22	1.70	4.50	2.89	-	-	-	1.00	7.00	4.19	-	-	-
10-Jan-22	1.73	8.00	3.47	-	-	-	2.52	5.50	4.11	-	-	-
11-Jan-22	1.80	6.34	3.34	3.99	3.99	3.99	4.20	6.20	4.65	-	-	-
12-Jan-22	1.65	6.67	3.34	3.99	3.99	3.99	3.70	6.00	4.45	-	-	-
13-Jan-22	1.70	8.60	3.48	3.99	3.99	3.99	3.70	6.20	4.70	-	-	-
14-Jan-22	1.67	4.60	2.91	-	-	-	2.70	6.50	4.00	-	-	-
15-Jan-22	1.70	6.10	3.00	-	-	-	2.81	6.50	4.02	-	-	-
16-Jan-22	1.58	3.90	2.69	-	-	-	2.81	7.00	3.74	-	-	-
17-Jan-22	1.69	6.10	3.20	-	-	-	2.82	7.00	4.02	-	-	-
18-Jan-22	1.80	7.50	3.74	3.99	4.99	4.49	2.81	6.50	4.12	-	-	-
19-Jan-22	1.99	8.76	4.18	3.99	3.99	3.99	2.81	7.00	4.60	-	-	-
20-Jan-22	2.00	10.00	4.56	3.99	3.99	3.99	2.82	7.00	4.72	-	-	-
21-Jan-22	1.95	7.50	4.21	3.99	4.99	4.89	2.52	7.00	4.53	-	-	-
22-Jan-22	1.71	6.03	3.36	3.99	4.99	4.49	2.82	8.00	5.00	-	-	-
23-Jan-22	1.67	4.52	2.94	-	-	-	2.61	5.00	3.54	-	-	-
24-Jan-22	1.70	9.21	3.94	-	-	-	2.61	7.00	4.09	-	-	-
25-Jan-22	1.71	10.49	3.99	3.99	4.99	4.49	2.61	7.00	4.38	-	-	-
26-Jan-22	1.70	7.00	3.15	4.99	4.99	4.99	2.00	5.00	2.79	-	-	-
27-Jan-22	1.67	8.00	4.00	4.99	4.99	4.99	2.52	7.00	4.10	-	-	-
28-Jan-22	1.71	8.00	3.72	3.99	4.99	4.66	2.61	7.00	4.08	-	-	-
29-Jan-22	1.71	8.00	4.10	-	-	-	2.61	7.00	4.28	-	-	-
30-Jan-22	2.00	7.50	3.48	-	-	-	2.00	5.50	3.82	-	-	-
31-Jan-22	2.02	11.27	4.58	4.99	4.99	4.99	2.61	7.17	4.29	-	-	-
	1.58#	11.27#	3.58	3.99#	4.99#	4.28	1.00#	8.00#	4.20	-	-	-

Source: IEX and PXIL

Note: GDAM was introduced on only IEX from 27th October 2021 onwards

* Weighted average price computed based on Area Clearing Volume (ACV) and Area Clearing Price (ACP) for each hour of the day. Here, ACV and ACP represent the scheduled volume and weighted average price of all the bid areas of power exchanges.

** Simple average price of DSM of 96 time blocks of 15 minutes each in a day. DSM price includes Ceiling DSM Rate +40% additional DSM charge.

Maximum/Minimum in the month

Table-26(b): PRICE OF SHORT-TERM TRANSACTIONS OF ELECTRICITY (DAY-WISE) (₹/kWh), JANUARY 2022

Market Segment	Real Time market of IEX			Real Time market of PXIL			Under Drawl/Over Drawl from the Grid (DSM)		
	Date	Minimum ACP	Maximum ACP	Weighted Average Price*	Minimum ACP	Maximum ACP	Weighted Average Price*	All India Grid	
Minimum Price								Maximum Price	Average Price**
1-Jan-22	1.00	5.51	3.40	-	-	-	0.00	6.21	2.66
2-Jan-22	0.51	3.68	2.66	-	-	-	0.00	6.75	2.49
3-Jan-22	0.50	10.10	3.84	-	-	-	0.00	8.00	4.15
4-Jan-22	1.67	10.00	4.24	-	-	-	0.00	8.00	3.76
5-Jan-22	1.72	5.98	3.38	-	-	-	0.72	7.72	3.77
6-Jan-22	1.62	9.50	3.92	-	-	-	0.00	8.00	3.50
7-Jan-22	1.55	4.85	3.50	-	-	-	0.00	8.00	3.13
8-Jan-22	1.45	3.94	2.57	-	-	-	0.00	6.19	2.42
9-Jan-22	1.00	5.04	2.70	-	-	-	0.00	6.70	2.20
10-Jan-22	1.00	4.71	2.60	-	-	-	0.00	5.05	2.45
11-Jan-22	1.59	6.50	3.13	-	-	-	0.00	7.70	3.16
12-Jan-22	1.50	6.00	3.47	-	-	-	0.00	7.09	2.69
13-Jan-22	1.00	8.00	3.31	-	-	-	0.00	7.11	2.98
14-Jan-22	1.65	5.79	3.14	-	-	-	0.00	8.00	3.07
15-Jan-22	1.46	4.49	2.78	-	-	-	0.00	8.00	2.57
16-Jan-22	1.46	3.84	2.87	-	-	-	0.00	7.66	3.08
17-Jan-22	1.00	17.80	4.48	-	-	-	0.00	8.00	3.04
18-Jan-22	2.00	20.00	5.30	-	-	-	0.00	6.62	3.88
19-Jan-22	2.25	10.00	4.74	-	-	-	0.00	8.00	4.18
20-Jan-22	2.05	9.00	4.26	-	-	-	0.00	7.08	3.91
21-Jan-22	1.94	7.50	3.98	-	-	-	0.00	8.00	3.45
22-Jan-22	1.65	4.00	2.71	-	-	-	0.00	7.70	3.27
23-Jan-22	1.68	3.70	2.69	-	-	-	0.00	8.00	2.47
24-Jan-22	1.68	7.00	3.53	-	-	-	0.00	8.00	3.40
25-Jan-22	1.94	8.32	3.75	-	-	-	0.00	8.00	3.28
26-Jan-22	1.78	6.11	3.24	-	-	-	0.00	8.00	3.24
27-Jan-22	1.00	6.00	3.10	-	-	-	0.00	6.10	3.03
28-Jan-22	1.55	8.50	3.91	-	-	-	0.00	8.00	3.59
29-Jan-22	2.02	12.57	4.61	-	-	-	0.00	8.00	4.10
30-Jan-22	2.14	7.00	3.80	-	-	-	0.00	7.41	3.12
31-Jan-22	1.81	8.89	4.81	-	-	-	0.00	8.00	4.38
	0.50#	20.00#	3.57	-	-	-	0.00#	8.00#	3.24

Source: Data on price of PX transactions from IEX and PXIL and data on DSM Price from NLDC.

* Weighted average price computed based on Area Clearing Volume (ACV) and Area Clearing Price (ACP) for each hour of the day. Here, ACV and ACP represent the scheduled volume and weighted average price of all the bid areas of power exchanges.

Maximum/Minimum in the month

Table-27: VOLUME OF SHORT-TERM TRANSACTIONS OF ELECTRICITY (REGIONAL ENTITY*-WISE) (MUs), JANUARY 2022										
Name of the Entity	Through Bilateral			Through Power Exchange (DAM + GDAM + RTM)			Through DSM with Regional Grid			Total Net***
	Sale	Purchase	Net**	Sale	Purchase	Net**	Import (Over Drawl)	Export (Under Drawl)	Net**	
PUNJAB	657.61	166.80	-490.81	1.05	465.46	464.41	30.52	71.52	-41.01	-67.40
HARYANA	214.62	102.19	-112.43	39.06	187.16	148.10	60.67	35.00	25.68	61.34
RAJASTHAN	1.42	501.64	500.22	424.43	331.37	-93.07	100.24	71.41	28.84	435.98
DELHI	388.94	97.95	-290.99	186.58	161.72	-24.85	20.71	28.35	-7.64	-323.49
UTTAR PRADESH	371.46	53.97	-317.49	743.18	318.92	-424.26	61.64	114.79	-53.14	-794.90
UTTARAKHAND	18.63	284.68	266.06	0.23	316.53	316.30	42.38	14.87	27.51	609.87
HIMACHAL PRADESH	10.64	473.51	462.88	82.45	59.81	-22.65	32.45	19.54	12.92	453.15
J & K	57.48	0.00	-57.48	17.16	920.77	903.61	28.48	27.44	1.04	847.17
CHANDIGARH	0.00	0.00	0.00	0.00	5.61	5.61	6.36	7.97	-1.61	4.00
MP	44.48	1151.15	1106.67	611.20	50.53	-560.67	47.80	86.64	-38.84	507.16
MAHARASHTRA	15.07	144.74	129.67	33.50	534.98	501.48	27.57	135.61	-108.04	523.11
GUJARAT	1.12	842.44	841.33	7.29	806.23	798.94	63.62	103.94	-40.32	1599.95
CHHATTISGARH	202.63	67.41	-135.22	442.72	0.03	-442.69	23.57	22.80	0.77	-577.15
GOA	14.63	40.07	25.44	29.14	3.33	-25.81	7.54	4.66	2.88	2.52
DAMAN AND DIU	0.00	0.00	0.00	0.00	10.01	10.01	9.32	1.05	8.27	18.28
DADRA & NAGAR HAVI	0.00	3.48	3.48	0.78	77.04	76.26	7.80	3.39	4.41	84.15
ANDHRA P	4.22	100.68	96.46	32.00	669.47	637.47	55.83	31.22	24.61	758.55
KARNATAKA	148.49	25.48	-123.01	271.58	58.22	-213.36	52.50	80.08	-27.58	-363.94
KERALA	0.00	160.51	160.51	141.38	34.62	-106.76	20.95	24.18	-3.23	50.52
TAMIL NADU	0.00	134.48	134.48	6.12	515.53	509.41	56.26	61.30	-5.04	638.85
PONDICHERRY	0.00	0.00	0.00	0.00	0.00	0.00	2.90	11.13	-8.23	-8.23
TELANGANA	16.26	23.76	7.50	74.29	761.18	686.90	33.59	63.53	-29.94	664.46
WEST BENGAL	59.45	187.87	128.42	1111.16	55.89	-1055.27	28.63	25.69	2.93	-923.92
ODISHA	94.44	325.53	231.09	234.05	263.06	29.01	40.36	33.85	6.51	266.62
BIHAR	37.67	48.50	10.82	630.16	8.48	-621.68	38.99	25.50	13.49	-597.37
JHARKHAND	0.00	186.02	186.02	30.00	1.71	-28.28	16.59	23.80	-7.21	150.52
SIKKIM	0.00	26.82	26.82	5.67	2.02	-3.65	2.85	6.61	-3.77	19.40
DVC	116.65	5.15	-111.50	19.29	0.08	-19.21	44.62	14.35	30.26	-100.44
ARUNACHAL P	0.00	22.69	22.69	9.45	0.18	-9.28	10.18	0.88	9.30	22.72
ASSAM	0.00	2.44	2.44	67.89	110.85	42.96	9.95	10.90	-0.95	44.45
MANIPUR	0.37	27.90	27.53	11.71	8.35	-3.36	2.30	2.54	-0.25	23.93
MEGHALAYA	4.65	94.73	90.08	0.00	20.90	20.90	5.03	2.85	2.18	113.16
MIZORAM	0.00	0.00	0.00	0.00	0.00	0.00	1.39	3.53	-2.14	-2.14
NAGALAND	3.72	3.72	0.00	1.10	0.02	-1.08	1.56	1.22	0.34	-0.74
TRIPURA	0.00	0.00	0.00	56.61	0.00	-56.61	1.19	10.97	-9.78	-66.40
NTPC STATIONS-NR	0.00	0.00	0.00	1.48	0.00	-1.48	91.92	41.46	50.46	48.98
NHPC STATIONS	0.00	0.00	0.00	0.00	0.00	0.00	10.18	79.14	-68.96	-68.96
NFF	0.00	0.00	0.00	0.00	0.00	0.00	0.19	0.28	-0.09	-0.09
RAIL	0.00	0.00	0.00	0.00	0.43	0.43	4.19	3.76	0.43	0.86
NEP	0.00	40.92	40.92	0.00	0.36	0.36	2.53	1.20	1.33	42.61
NAPP	0.00	0.00	0.00	0.00	0.00	0.00	2.48	0.37	2.11	2.11
RAP B	0.00	0.00	0.00	0.00	0.00	0.00	5.49	3.13	2.36	2.36
NJPC	0.00	0.00	0.00	0.00	0.00	0.00	1.36	5.85	-4.49	-4.49
TEHRI	0.00	0.00	0.00	0.00	0.00	0.00	4.83	2.36	2.46	2.46
BBMB	0.00	0.00	0.00	0.00	0.00	0.00	3.30	11.58	-8.28	-8.28
RAP C	0.00	0.00	0.00	0.00	0.00	0.00	1.76	7.99	-6.23	-6.23
AD HYDRO	0.00	0.00	0.00	14.57	0.00	-14.57	0.62	0.67	-0.05	-14.62
IGSTPS	0.00	0.00	0.00	0.00	0.00	0.00	13.98	11.71	2.27	2.27
KOTESHWAR	0.00	0.00	0.00	0.00	0.00	0.00	0.82	2.62	-1.80	-1.80
KARCHAM WANGTOO	0.00	0.00	0.00	13.48	0.00	-13.48	7.62	8.39	-0.77	-14.24
LANCO BUDHIL	0.00	0.00	0.00	0.45	0.00	-0.45	0.43	0.34	0.09	-0.36
RAMPUR HEP	0.00	0.00	0.00	0.00	0.00	0.00	0.39	3.83	-3.44	-3.44
SORANG HEP	2.18	0.00	-2.18	2.49	0.00	-2.49	0.40	0.47	-0.07	-4.74
SAINJ HEP	0.00	0.00	0.00	8.29	0.00	-8.29	0.19	0.68	-0.49	-8.79

RENEW_SLR	0.00	0.00	0.00	0.00	0.00	0.00	0.61	0.63	-0.01	-0.01
AZURE_SLR	0.00	0.00	0.00	0.00	0.00	0.00	1.03	4.68	-3.65	-3.65
SB_SLR	0.00	0.00	0.00	0.00	0.00	0.00	0.78	11.69	-10.91	-10.91
ACME_SLR	0.00	0.00	0.00	0.00	0.00	0.00	2.20	3.27	-1.07	-1.07
AZURE34_SLR	0.00	0.00	0.00	0.00	0.00	0.00	1.52	1.57	-0.04	-0.04
TATA_SLR	31.23	0.00	-31.23	0.00	0.00	0.00	5.90	1.65	4.25	-26.98
RENEW_SLR_BKN	0.00	0.00	0.00	0.00	0.00	0.00	3.08	3.98	-0.91	-0.91
CLEAN_SLR	0.00	0.00	0.00	0.00	0.00	0.00	3.51	7.50	-3.99	-3.99
ARERJL_SLR	4.45	0.00	-4.45	0.00	0.00	0.00	3.98	3.73	0.26	-4.19
ASEJTL_SLR	9.38	0.00	-9.38	0.00	0.00	0.00	0.97	0.98	-0.02	-9.40
SINGOLI BHATWARI HE	0.00	0.00	0.00	3.52	0.00	-3.52	0.02	0.39	-0.37	-3.89
AZURE43_SLR	1.78	0.00	-1.78	1.01	0.00	-1.01	8.46	8.15	0.31	-2.48
MRPL	0.00	0.00	0.00	0.00	0.00	0.00	2.72	2.72	0.00	0.00
SB6_POKARAN	0.00	0.00	0.00	0.00	0.00	0.00	3.28	4.31	-1.03	-1.03
EDEN_SLR	0.00	0.00	0.00	0.00	0.00	0.00	2.18	4.07	-1.89	-1.89
SBSR_SLR	0.00	0.00	0.00	0.00	0.00	0.00	1.19	2.59	-1.40	-1.40
RENEWSW_SLR	41.64	0.00	-41.64	0.00	0.00	0.00	2.49	3.35	-0.86	-42.50
ADANIHB_SLR	56.36	0.00	-56.36	9.99	0.00	-9.99	5.43	9.39	-3.96	-70.30
RENEWJH_SLR	0.00	0.00	0.00	11.54	0.00	-11.54	3.15	3.92	-0.77	-12.31
ADANIHB_WIND	3.61	0.00	-3.61	0.00	0.00	0.00	0.00	0.00	0.00	-3.61
ADANI_SLR	0.00	0.00	0.00	0.33	0.00	-0.33	0.00	0.00	0.00	-0.33
AHEJ2L_SOLAR	17.02	0.00	-17.02	4.63	0.00	-4.63	1.96	1.90	0.07	-21.58
AHEJ2L_WIND	2.10	0.00	-2.10	0.00	0.00	0.00	0.00	0.00	0.00	-2.10
AHEJ3L_SOLAR	27.45	0.00	-27.45	8.57	0.00	-8.57	3.89	3.00	0.88	-35.14
AHEJ3L_WIND	1.37	0.00	-1.37	0.00	0.00	0.00	0.00	0.00	0.00	-1.37
AHEJ4L_WIND	10.08	0.00	-10.08	0.00	0.00	0.00	0.00	0.00	0.00	-10.08
AHEJ4L_SOLAR	44.39	0.00	-44.39	0.00	0.00	0.00	2.53	10.32	-7.78	-52.17
RENEWSW	0.00	0.00	0.00	0.00	0.00	0.00	3.09	4.09	-1.00	-1.00
AZURE41_SLR	0.00	0.00	0.00	0.00	0.00	0.00	2.27	2.14	0.13	0.13
AYANA_RP1	24.51	0.00	-24.51	1.00	0.00	-1.00	5.74	5.66	0.08	-25.43
AVAADASN_SLR	17.05	0.00	-17.05	0.00	0.00	0.00	2.85	8.15	-5.30	-22.35
RENEWURJA_SLR	40.29	0.00	-40.29	8.55	0.00	-8.55	4.74	5.28	-0.53	-49.37
AVADARJHN_SLR	0.00	0.00	0.00	0.00	0.00	0.00	2.98	2.43	0.55	0.55
NCR ALLAHABAD	0.00	37.20	37.20	0.00	0.00	0.00	0.00	0.00	0.00	37.20
NTPC STATIONS-WR	0.00	0.00	0.00	11.09	0.00	-11.09	126.83	136.10	-9.270	-20.364
BHADRAVATHI HVDC	0.00	0.00	0.00	0.00	0.00	0.00	0.01	0.09	-0.09	-0.09
VINDHYACHAL HVDC	0.00	0.00	0.00	0.00	0.00	0.00	0.00	0.22	-0.22	-0.22
JINDAL POWER	51.97	0.00	-51.97	146.42	0.40	-146.03	3.07	3.75	-0.68	-198.68
LANKO_AMK	8.18	0.00	-8.18	0.00	0.00	0.00	1.14	6.19	-5.06	-13.24
NSPCL	0.00	0.00	0.00	0.00	0.00	0.00	6.82	3.25	3.58	3.58
ACBIL	0.00	0.00	0.00	74.40	0.00	-74.40	1.96	4.51	-2.54	-76.94
BALCO	6.43	0.00	-6.43	4.58	0.00	-4.58	14.76	2.22	12.54	1.54
RGPL	0.00	0.00	0.00	5.25	0.00	-5.25	4.51	1.58	2.92	-2.33
CGPL	0.00	0.00	0.00	0.00	0.00	0.00	12.55	1.33	11.22	11.22
DCPP	0.00	0.00	0.00	0.00	0.00	0.00	0.01	0.01	0.00	0.00
EMCO	0.00	0.00	0.00	5.03	0.00	-5.03	4.79	1.32	3.47	-1.57
KSK MAHANADI	0.00	0.00	0.00	0.00	0.00	0.00	2.44	2.10	0.34	0.34
ESSAR POWER	82.58	0.00	-82.58	110.07	0.00	-110.07	22.64	26.79	-4.15	-196.80
JINDAL STAGE-II	94.52	0.00	-94.52	161.18	0.00	-161.18	5.33	3.19	2.15	-253.55
DB POWER	344.80	0.00	-344.80	69.41	0.00	-69.41	5.16	2.52	2.64	-411.58
DHARIWAL POWER	0.00	0.00	0.00	0.52	0.00	-0.52	1.84	0.92	0.92	0.40
JAYPEE NIGRIE	161.07	0.00	-161.07	58.98	0.00	-58.98	0.30	4.50	-4.20	-224.25
DGEN MEGA POWER	0.00	0.00	0.00	0.00	0.00	0.00	1.00	0.00	1.00	1.00
MB POWER	130.91	0.00	-130.91	68.70	0.00	-68.70	4.88	5.67	-0.79	-200.41
MARUTI COAL	0.00	0.00	0.00	26.35	0.49	-25.87	0.00	0.00	0.00	-25.87
JHABUA POWER_MP	23.68	0.00	-23.68	15.13	0.00	-15.13	6.13	4.70	1.43	-37.37
SASAN UMPP	0.00	0.00	0.00	48.10	0.00	-48.10	0.66	40.57	-39.91	-88.02
TRN ENERGY	0.00	0.00	0.00	0.00	0.00	0.00	0.22	0.00	0.22	0.22
RKM POWER	313.57	0.00	-313.57	124.04	0.00	-124.04	6.09	7.58	-1.49	-439.10
SKS POWER	0.00	0.00	0.00	0.09	0.00	-0.09	1.79	0.09	1.70	1.61
BARC	0.00	0.00	0.00	0.00	0.00	0.00	0.01	0.74	-0.74	-0.74
KAPP 3&4	0.00	0.00	0.00	0.00	0.00	0.00	7.69	0.00	7.69	7.69
HVDC CHAMPA	0.00	0.00	0.00	0.00	0.00	0.00	0.43	0.01	0.41	0.41

MAHINDRA_RUMS	0.00	0.00	0.00	0.00	0.00	0.00	4.46	2.64	1.82	1.82
ARINSUM_RUMS	0.00	0.00	0.00	0.00	0.00	0.00	4.55	3.16	1.40	1.40
OSTRO	1.03	0.00	-1.03	1.51	0.00	-1.51	4.87	10.37	-5.50	-8.04
ACME_RUMS	0.00	0.00	0.00	0.00	0.00	0.00	5.05	2.72	2.33	2.33
RENEW_BHACHAU	0.00	0.00	0.00	0.00	0.00	0.00	5.72	9.66	-3.94	-3.94
GIWEL_BHUJ	0.00	0.00	0.00	0.00	0.00	0.00	8.70	17.81	-9.11	-9.11
INOX_BHUJ	0.00	0.00	0.00	0.00	0.00	0.00	3.74	11.62	-7.88	-7.88
AGEMPL BHUJ	0.00	0.00	0.00	0.00	0.00	0.00	10.30	21.74	-11.45	-11.45
REGL	0.36	0.00	-0.36	0.77	0.00	-0.77	0.00	0.00	0.00	-1.13
RPREL	698.92	0.00	-698.92	3.85	0.00	-3.85	9.92	2.66	7.26	-695.50
AMPS Hazira	0.00	274.28	274.28	0.00	32.80	32.80	0.00	0.00	0.00	307.08
HVDC RAIGARH	0.00	0.00	0.00	0.00	0.00	0.00	0.26	0.00	0.26	0.26
RGPPL_Others	0.00	0.00	0.00	0.29	0.00	-0.29	0.00	0.00	0.00	-0.29
ALFANAR_BHUJ	0.00	0.00	0.00	0.00	0.00	0.00	5.65	10.45	-4.79	-4.79
RENEW_BHUJ	0.00	0.00	0.00	0.00	0.00	0.00	5.95	7.68	-1.73	-1.73
ADANI_WIND	7.36	0.00	-7.36	4.83	0.00	-4.83	0.00	0.00	0.00	-12.19
CONTINNUM PT	2.39	0.00	-2.39	0.14	0.00	-0.14	0.00	0.00	0.00	-2.54
TPREL_RADHANESDA	0.00	0.00	0.00	0.00	0.00	0.00	1.55	1.01	0.54	0.54
ESPL_RADHANESDA	0.00	0.00	0.00	0.00	0.00	0.00	2.13	1.45	0.68	0.68
GIPCL_RADHANESDA	0.00	0.00	0.00	0.00	0.00	0.00	1.76	0.93	0.83	0.83
NTPC STATIONS-SR	0.00	0.00	0.00	94.47	0.00	-94.47	38.76	35.09	3.66	-90.81
LANKO KONDAPALLI	0.00	0.00	0.00	0.00	0.00	0.00	0.34	0.00	0.34	0.34
SIMHAPURI	0.00	0.00	0.00	0.00	0.00	0.00	0.39	0.00	0.39	0.39
MEENAKSHI	0.00	0.00	0.00	0.00	0.00	0.00	0.54	0.00	0.54	0.54
COASTGEN	0.00	0.00	0.00	0.00	0.00	0.00	3.15	0.00	3.15	3.15
THERMAL POWERTECH	0.00	0.00	0.00	0.00	0.00	0.00	17.89	2.12	15.77	15.77
IL&FS	0.00	0.00	0.00	0.00	0.00	0.00	9.48	0.02	9.46	9.46
NLC	0.00	0.00	0.00	97.21	0.00	-97.21	25.65	28.53	-2.88	-100.09
SEMBCORP	182.84	0.00	-182.84	210.41	0.00	-210.41	10.87	2.33	8.54	-384.71
NETCL VALLUR	0.00	0.00	0.00	0.00	0.00	0.00	14.11	2.26	11.84	11.84
NTPL	0.00	0.00	0.00	0.00	0.00	0.00	9.41	0.23	9.17	9.17
AHSP_ANTP	0.00	0.00	0.00	0.00	0.00	0.00	0.90	1.14	-0.25	-0.25
AKSP_ANTP	0.00	0.00	0.00	0.00	0.00	0.00	1.11	0.73	0.37	0.37
ABSP_ANTP	0.00	0.00	0.00	0.00	0.00	0.00	0.90	1.07	-0.16	-0.16
AZURE_ANTP	0.00	0.00	0.00	0.00	0.00	0.00	0.50	0.90	-0.40	-0.40
TATA_ANTP	0.00	0.00	0.00	0.00	0.00	0.00	1.19	1.92	-0.73	-0.73
FRV_ANTP	0.00	0.00	0.00	0.00	0.00	0.00	0.31	0.60	-0.29	-0.29
NTPC_ANTP	0.00	0.00	0.00	0.00	0.00	0.00	3.61	3.54	0.07	0.07
GIWEL_TCN	0.00	0.00	0.00	0.00	0.00	0.00	7.76	5.21	2.54	2.54
MYTRAH_TCN	0.00	0.00	0.00	0.00	0.00	0.00	7.28	2.34	4.95	4.95
FRV_NPK	0.00	0.00	0.00	0.00	0.00	0.00	0.13	0.72	-0.60	-0.60
ORANGE_TCN	0.00	0.00	0.00	0.00	0.00	0.00	9.35	2.99	6.36	6.36
BETAM_TCN	0.00	0.00	0.00	0.00	0.00	0.00	5.53	5.26	0.27	0.27
SBG_PVGD	0.00	0.00	0.00	0.00	0.00	0.00	2.42	2.27	0.16	0.16
SBG_NPK	0.00	0.00	0.00	0.00	0.00	0.00	3.01	2.77	0.24	0.24
FORTUM1_PVGD	0.00	0.00	0.00	0.00	0.00	0.00	1.16	1.29	-0.12	-0.12
PARAM_PVGD	0.00	0.00	0.00	0.00	0.00	0.00	0.36	0.80	-0.43	-0.43
YARROW_PVGD	0.00	0.00	0.00	0.00	0.00	0.00	0.16	0.24	-0.07	-0.07
TATA_PVGD	0.00	0.00	0.00	0.00	0.00	0.00	0.92	1.50	-0.58	-0.58
RENEW_PVGD	0.00	0.00	0.00	0.00	0.00	0.00	0.14	0.21	-0.07	-0.07
AKS_PVGD	0.00	0.00	0.00	0.00	0.00	0.00	0.17	0.20	-0.03	-0.03
ARS_PVGD	0.00	0.00	0.00	0.00	0.00	0.00	0.14	0.19	-0.05	-0.05
AVAADA1_PVGD	0.00	0.00	0.00	0.00	0.00	0.00	0.36	0.64	-0.28	-0.28
ADY1_PVGD	0.00	0.00	0.00	0.00	0.00	0.00	0.43	1.52	-1.10	-1.10
ADY2_PVGD	0.00	0.00	0.00	0.00	0.00	0.00	0.43	1.52	-1.09	-1.09
ADY13_PVGD	0.00	0.00	0.00	0.00	0.00	0.00	0.43	1.52	-1.09	-1.09
ADY3_PVGD	0.00	0.00	0.00	0.00	0.00	0.00	0.72	1.43	-0.71	-0.71
ADY6_PVGD	0.00	0.00	0.00	0.00	0.00	0.00	0.72	1.43	-0.71	-0.71
ADY10_PVGD	0.00	0.00	0.00	0.00	0.00	0.00	0.43	1.52	-1.09	-1.09
AZURE_PVGD	0.00	0.00	0.00	0.00	0.00	0.00	0.14	0.58	-0.44	-0.44
FORTUM2_PVGD	0.00	0.00	0.00	0.00	0.00	0.00	0.29	1.34	-1.05	-1.05
AVAADA2_PVGD	0.00	0.00	0.00	0.00	0.00	0.00	0.27	0.67	-0.40	-0.40
KREDL_PVGD	0.00	0.00	0.00	0.00	0.00	0.00	0.21	0.10	0.11	0.11

AYANA_NPKUNTA	0.00	0.00	0.00	0.00	0.00	0.00	0.52	1.09	-0.57	-0.57
SPRNG_NPKUNTA	0.00	0.00	0.00	0.00	0.00	0.00	0.62	1.42	-0.80	-0.80
SPRING_PUGALUR	0.00	0.00	0.00	0.00	0.00	0.00	1.58	2.01	-0.43	-0.43
OSTRO Hiriyur	0.00	0.00	0.00	0.00	0.00	0.00	1.72	0.94	0.78	0.78
NTPC STATIONS-ER	0.00	0.00	0.00	4.51	0.00	-4.51	61.98	49.65	12.34	7.82
MAITHON POWER LTD	0.00	0.00	0.00	0.00	0.00	0.00	4.32	6.65	-2.34	-2.34
NPGC	0.00	0.00	0.00	0.00	0.00	0.00	5.81	9.03	-3.22	-3.22
ADHUNIK POWER LTD	155.78	0.00	-155.78	19.50	0.00	-19.50	1.57	1.83	-0.26	-175.54
CHUZACHEN HEP	0.00	0.00	0.00	1.46	0.00	-1.46	0.24	0.44	-0.20	-1.66
RANGIT HEP	0.00	0.00	0.00	0.00	0.00	0.00	0.33	0.91	-0.58	-0.58
GMR KAMALANGA	26.27	0.00	-26.27	21.17	0.00	-21.17	2.51	4.53	-2.02	-49.46
JITPL	457.44	0.00	-457.44	12.75	0.00	-12.75	4.98	2.45	2.52	-467.67
TEESTA HEP	0.00	0.00	0.00	0.00	0.00	0.00	0.02	2.11	-2.09	-2.09
DAGACHU	24.12	0.00	-24.12	0.00	0.00	0.00	4.72	0.00	4.71	-19.41
JORETHANG	1.18	0.00	-1.18	14.21	0.00	-14.21	2.04	0.11	1.93	-13.47
NEPAL(NVVN)	0.00	0.00	0.00	0.00	157.94	157.94	2.42	13.11	-10.69	147.24
BANGLADESH	0.00	0.00	0.00	0.00	0.00	0.00	3.75	1.12	2.63	2.63
HVDC PUS	0.00	0.00	0.00	0.00	0.00	0.00	0.45	0.00	0.45	0.45
TEESTA STG3	23.12	0.00	-23.12	115.93	0.00	-115.93	2.68	1.07	1.61	-137.44
DIKCHU HEP	7.64	0.00	-7.64	1.08	0.00	-1.08	0.38	0.44	-0.06	-8.77
HVDC ALPD	0.00	0.00	0.00	0.00	0.00	0.00	0.21	0.00	0.21	0.21
TASHIDENG HEP	1.33	0.00	-1.33	15.79	0.00	-15.79	2.01	0.33	1.69	-15.44
BRBCL,NABINAGAR	0.00	0.00	0.00	0.00	0.00	0.00	4.87	6.46	-1.59	-1.59
MTPS II	0.00	0.00	0.00	4.07	0.00	-4.07	2.47	3.33	-0.85	-4.92
TALA HEP	0.00	0.00	0.00	0.00	0.00	0.00	40.26	0.00	40.26	40.26
CHUKHA HEP	0.00	0.00	0.00	0.00	0.00	0.00	73.53	0.00	73.53	73.53
KURICHU HEP	0.00	0.00	0.00	0.00	0.00	0.00	6.71	1.11	5.59	5.59
MANGDECHU HEP	0.00	0.00	0.00	0.00	0.00	0.00	17.77	37.20	-19.44	-19.44
RONGNICHU HEP	0.00	0.00	0.00	0.00	0.00	0.00	0.32	0.41	-0.08	-0.08
DGPCL Bhutan	0.00	0.00	0.00	0.00	101.28	101.28	6.87	3.34	3.54	104.82
NTPC STATIONS-NER	0.00	0.00	0.00	9.48	0.00	-9.48	6.20	1.84	4.36	-5.11
NEEPCO STATIONS	18.16	0.00	-18.16	52.57	0.00	-52.57	2.39	11.25	-8.86	-79.60
RANGANADI HEP	0.00	0.00	0.00	0.00	0.00	0.00	1.62	0.67	0.95	0.95
DOYANG HEP	0.00	0.00	0.00	0.00	0.00	0.00	0.25	0.23	0.02	0.02
ONGC PALATANA	8.88	0.00	-8.88	27.24	0.00	-27.24	0.25	1.05	-0.81	-36.92
LOKTAK	0.00	0.00	0.00	0.00	0.00	0.00	0.18	0.75	-0.57	-0.57
PARE HEP	0.00	0.00	0.00	0.00	0.00	0.00	0.07	0.42	-0.35	-0.35

Source: NLDC

* in case of a state, the entities which are "selling" also include generators connected to state grid and the entities which are "buying" also include open access consumers.

** (-) indicates sale and (+) indicates purchase.

*** Total net includes net of transactions through bilateral, power exchange and DSM

Table-28: VOLUME AND PRICE OF RENEWABLE ENERGY CERTIFICATES (RECs) TRANSACTED THROUGH POWER EXCHANGES, JANUARY 2022					
Sr. No.	Details of REC Transactions	IEX		PXIL	
		Solar	Non-Solar	Solar	Non-Solar
A	Volume of Buy Bid	519327	933359	175308	310706
B	Volume of Sell Bid	603289	1671523	86290	492641
C	Ratio of Buy Bid to Sell Bid Volume	0.86	0.56	2.03	0.63
D	Market Clearing Volume (MWh)	193121	933359	60897	299506
E	Weighted average Market Clearing Price (₹/MWh)	2300	1000	2400	1000

Source: IEX and PXIL

Note 1: 1 REC = 1 MWh